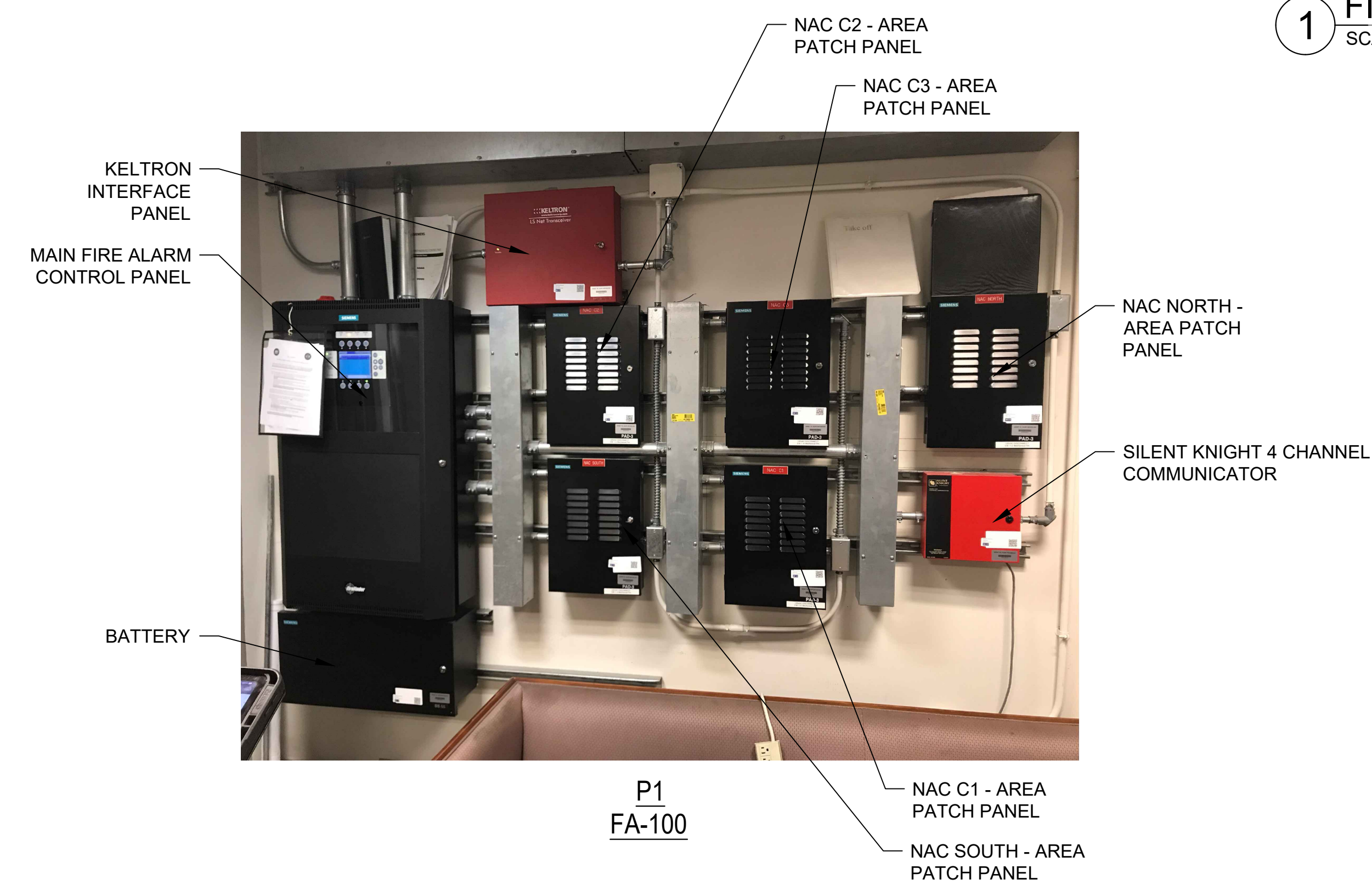


1 FIRE ALARM SYSTEM BASEMENT FLOOR PLAN  
SCALE: 1 : 125



- LEGEND:**
- [FCP] FIRE ALARM CONTROL PANEL
  - [FPR] FIRE PUMP RUN
  - [FPF] FIRE PUMP FAULT
  - [FPO] FIRE PUMP OFF
  - [FPRAPS] FIRE PUMP RUN ALT POWER SOURCE
  - [IAM] FIRE ALARM INTERFACE MODULES
  - [GENR] GENERATOR RUN
  - [GENF] GENERATOR FAULT
  - [TRN] TURNSTILES
  - [PRI] PRIMARY RECALL
  - [ALT] ALTERNATIVE RECALL
  - [HAT] FIREMANS HAT
  - [REL] RELAY MODULE
  - [ST] SHUNT TRIP
  - [P] MANUAL PULL STATION
  - [WS] WALL MOUNTED SPEAKER, M.H. 80" AFF
  - [WS/ST] WALL MOUNTED SPEAKER/ STROBE, M.H. 80" AFF
  - [CS] CEILING MOUNTED SPEAKER
  - [WS/ST] WALL MOUNTED STORBE, M.H. 80" AFF
  - [CS/ST] CEILING MOUNTED SPEAKER AND STROBE
  - [CS/ST] CEILING MOUNTED STROBE
  - [SD] SMOKE DETECTOR
  - [SD] DUCT SMOKE DETETOR
  - [HD] HEAT DETECTOR
  - [VTS] VALVE TAMPER SWITCH
  - [FS] FLOW SWITCH
  - [APS] ALARM PRESSURE SWITCH
  - [H/LPS] HIGH / LOW PRESSURE SWITCH
  - [FP] FIELD PHOTOGRAPH

CLIENT INFORMATION



SUPERIOR COURT OF THE  
DISTRICT OF COLUMBIA

PROJECT TITLE

FIRE ALARM RISER & FLOOR PLANS  
AS-BUILTS

PROJECT LOCATION

DC SUPERIOR COURT PROBATE  
DIVISION - BUILDING A

SEAL & SIGNATURE

PROFESSIONAL CERTIFICATION:  
I HEREBY CERTIFY THAT THESE DOCUMENTS WERE  
PREPARED OR APPROVED BY ME, AND THAT I AM A DULY  
LICENSED PROFESSIONAL ENGINEER UNDER THE LAWS OF  
THE STATE OF MARYLAND, LICENSE NO. \_\_\_\_\_  
EXPIRATION DATE: \_\_\_\_\_



**ASTUTE ENGINEERING, PLLC.**  
1945 OLD GALLOWS ROAD, STE 201, VIENNA, VA 22182  
PH: (202) 400-2004 | WWW.ASTUTENG.COM

FOR REVIEW ONLY

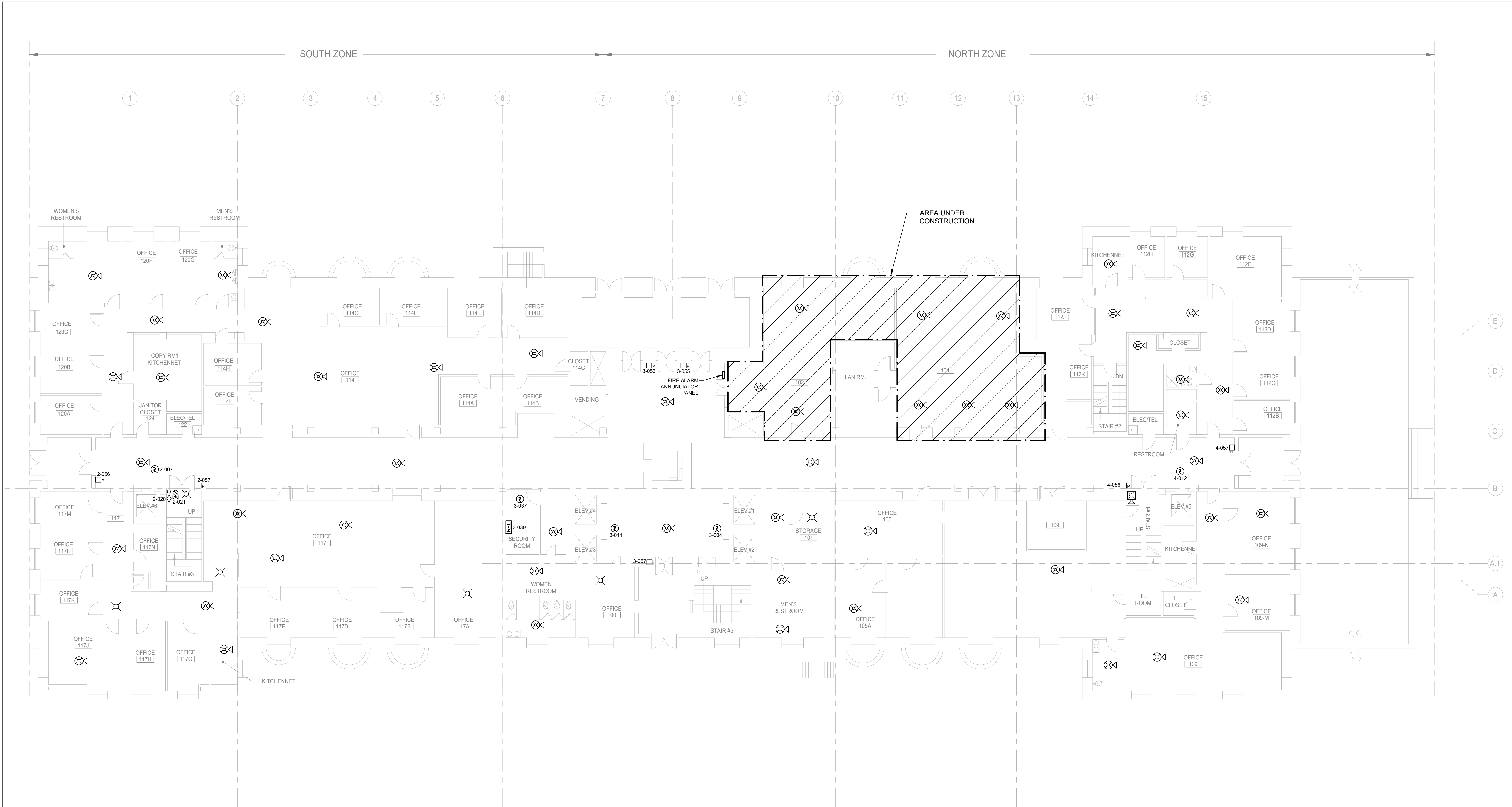
REVISIONS		
NO.	DESCRIPTION	DATE

TITLE  
BASEMENT FLOOR FIRE  
ALARM SYSTEM  
AS-BUILT

DRAWING NO.  
FA100

SCALE: 1 : 125		
DATE: 11/30/2023		
DES: KS	DRAWN: NS	CHECKED: HU





1 FIRE ALARM SYSTEM FIRST FLOOR PLAN  
SCALE: 1 : 125

- LEGEND:**
- [FCP] FIRE ALARM CONTROL PANEL
  - [FPR] FIRE PUMP RUN
  - [FPF] FIRE PUMP FAULT
  - [FPO] FIRE PUMP OFF
  - [FPRAPS] FIRE PUMP RUN ALT POWER SOURCE
  - [IAM] FIRE ALARM INTERFACE MODULES
  - [GENR] GENERATOR RUN
  - [GENF] GENERATOR FAULT
  - [TRN] TURNSTILES
  - [PRI] PRIMARY RECALL
  - [ALT] ALTERNATIVE RECALL
  - [HAT] FIREMANS HAT
  - [REL] RELAY MODULE
  - [ST] SHUNT TRIP
  - [P] MANUAL PULL STATION
  - [WS] WALL MOUNTED SPEAKER, M.H. 80" AFF
  - [WSS] WALL MOUNTED SPEAKER/ STROBE, M.H. 80" AFF
  - [CS] CEILING MOUNTED SPEAKER
  - [WST] WALL MOUNTED STORBE, M.H. 80"AFF
  - [CSS] CEILING MOUNTED SPEAKER AND STROBE
  - [CSST] CEILING MOUNTED STROBE
  - [SD] SMOKE DETECTOR
  - [SDS] DUCT SMOKE DETECTOR
  - [HSD] HEAT DETECTOR
  - [VTS] VALVE TAMPER SWITCH
  - [FS] FLOW SWITCH
  - [APS] ALARM PRESSURE SWITCH
  - [H/LPS] HIGH / LOW PRESSURE SWITCH
  - [FP] FIELD PHOTOGRAPH

CLIENT INFORMATION



SUPERIOR COURT OF THE  
DISTRICT OF COLUMBIA

PROJECT TITLE

FIRE ALARM RISER & FLOOR PLANS  
AS-BUILTS

PROJECT LOCATION

DC SUPERIOR COURT PROBATE  
DIVISION - BUILDING A

SEAL & SIGNATURE

PROFESSIONAL CERTIFICATION:  
I HEREBY CERTIFY THAT THESE DOCUMENTS WERE  
PREPARED OR APPROVED BY ME, AND THAT I AM A DULY  
LICENSED PROFESSIONAL ENGINEER UNDER THE LAWS OF  
THE STATE OF MARYLAND, LICENSE NO. \_\_\_\_\_  
EXPIRATION DATE: \_\_\_\_\_



**ASTUTE ENGINEERING, PLLC.**  
1945 OLD GALLOW'S ROAD, STE 201, VIENNA, VA 22182  
PH: (202) 400-2004 | WWW.ASTUTENG.COM

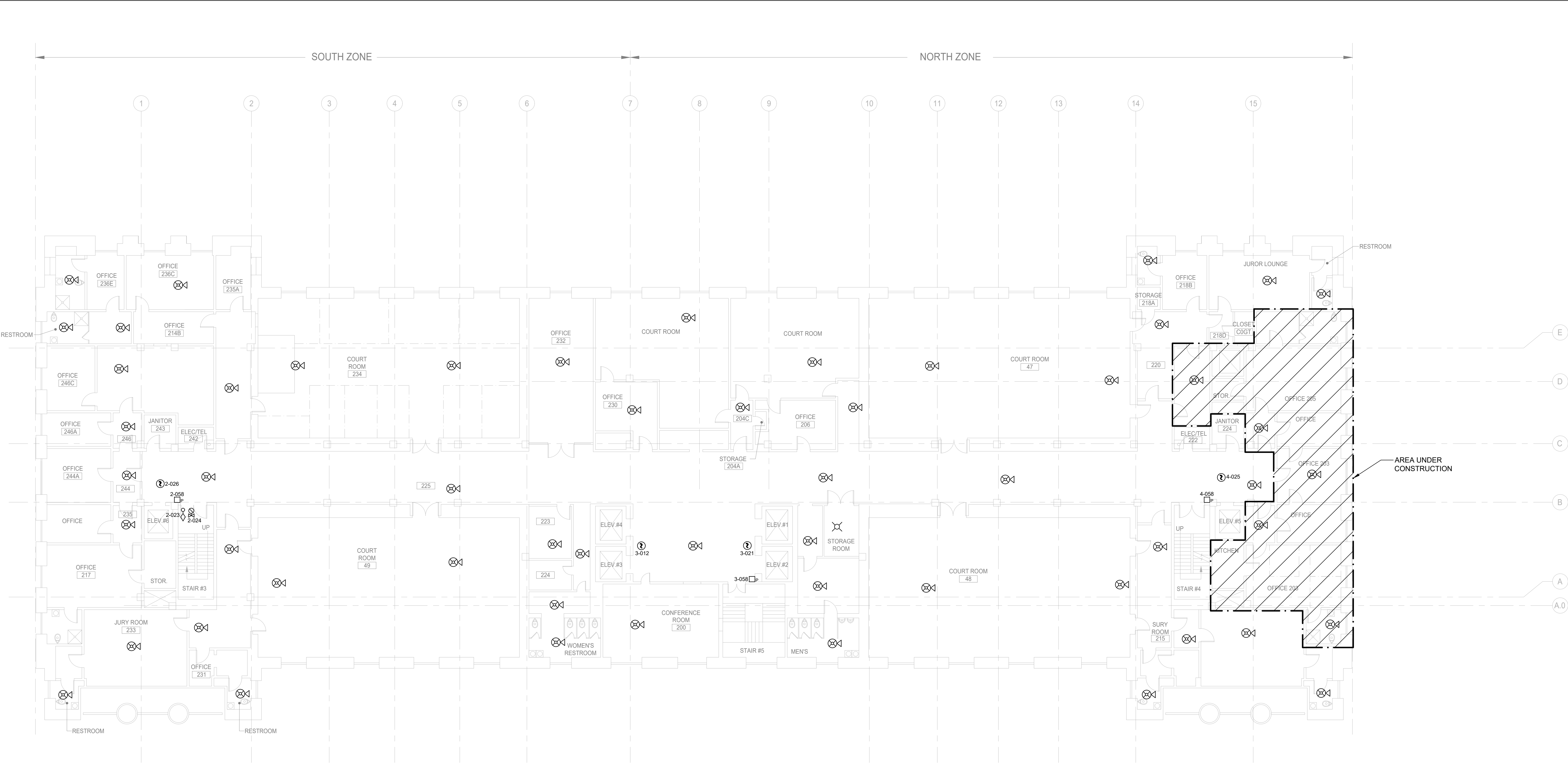
FOR REVIEW ONLY

REVISIONS		
NO.	DESCRIPTION	DATE

TITLE  
FIRST FLOOR FIRE  
ALARM SYSTEM  
AS-BUILT

DRAWING NO.  
FA101


SCALE: 1 : 125  
DATE: 11/30/2023  
DES: KS    DRAWN: NS    CHECKED: HU



1 FIRE ALARM SECOND FLOOR PLAN  
SCALE: 1 : 125

- LEGEND:**
- FCP FIRE ALARM CONTROL PANEL
  - FPR FIRE PUMP RUN
  - FPF FIRE PUMP FAULT
  - FPO FIRE PUMP OFF
  - FPRAPS FIRE PUMP RUN ALT POWER SOURCE
  - IAM FIRE ALARM INTERFACE MODULES
  - GENR GENERATOR RUN
  - GENF GENERATOR FAULT
  - TRN TURNSTILES
  - PRI PRIMARY RECALL
  - ALT ALTERNATIVE RECALL
  - HAT FIREMANS HAT
  - REL RELAY MODULE
  - ST SHUNT TRIP
  - P MANUAL PULL STATION
  - WALL MOUNTED SPEAKER, M.H. 80" AFF
  - WALL MOUNTED SPEAKER/ STROBE, M.H. 80" AFF
  - CEILING MOUNTED SPEAKER
  - WALL MOUNTED STORBE, M.H. 80"AFF
  - CEILING MOUNTED SPEAKER AND STROBE
  - CEILING MOUNTED STROBE
  - SMOKE DETECTOR
  - DUCT SMOKE DETECTOR
  - HEAT DETECTOR
  - VALVE TAMPER SWITCH
  - FLOW SWITCH
  - ALARM PRESSURE SWITCH
  - HIGH / LOW PRESSURE SWITCH
  - FIELD PHOTOGRAPH

CLIENT INFORMATION



**SUPERIOR COURT OF THE DISTRICT OF COLUMBIA**

PROJECT TITLE


FIRE ALARM RISER & FLOOR PLANS  
AS-BUILTS

PROJECT LOCATION

DC SUPERIOR COURT PROBATE  
DIVISION - BUILDING A

SEAL & SIGNATURE

PROFESSIONAL CERTIFICATION:  
I HEREBY CERTIFY THAT THESE DOCUMENTS WERE  
PREPARED OR APPROVED BY ME, AND THAT I AM A DULY  
LICENSED PROFESSIONAL ENGINEER UNDER THE LAWS OF  
THE STATE OF MARYLAND, LICENSE NO. \_\_\_\_\_  
EXPIRATION DATE: \_\_\_\_\_



**ASTUTE ENGINEERING, PLLC.**  
1945 OLD GALLOW'S ROAD, STE 201, VIENNA, VA 22182  
PH: (202) 400-2004 | WWW.ASTUTENG.COM

FOR REVIEW ONLY

REVISIONS		
NO.	DESCRIPTION	DATE

TITLE

**SECOND FLOOR FIRE ALARM SYSTEM  
AS-BUILT**

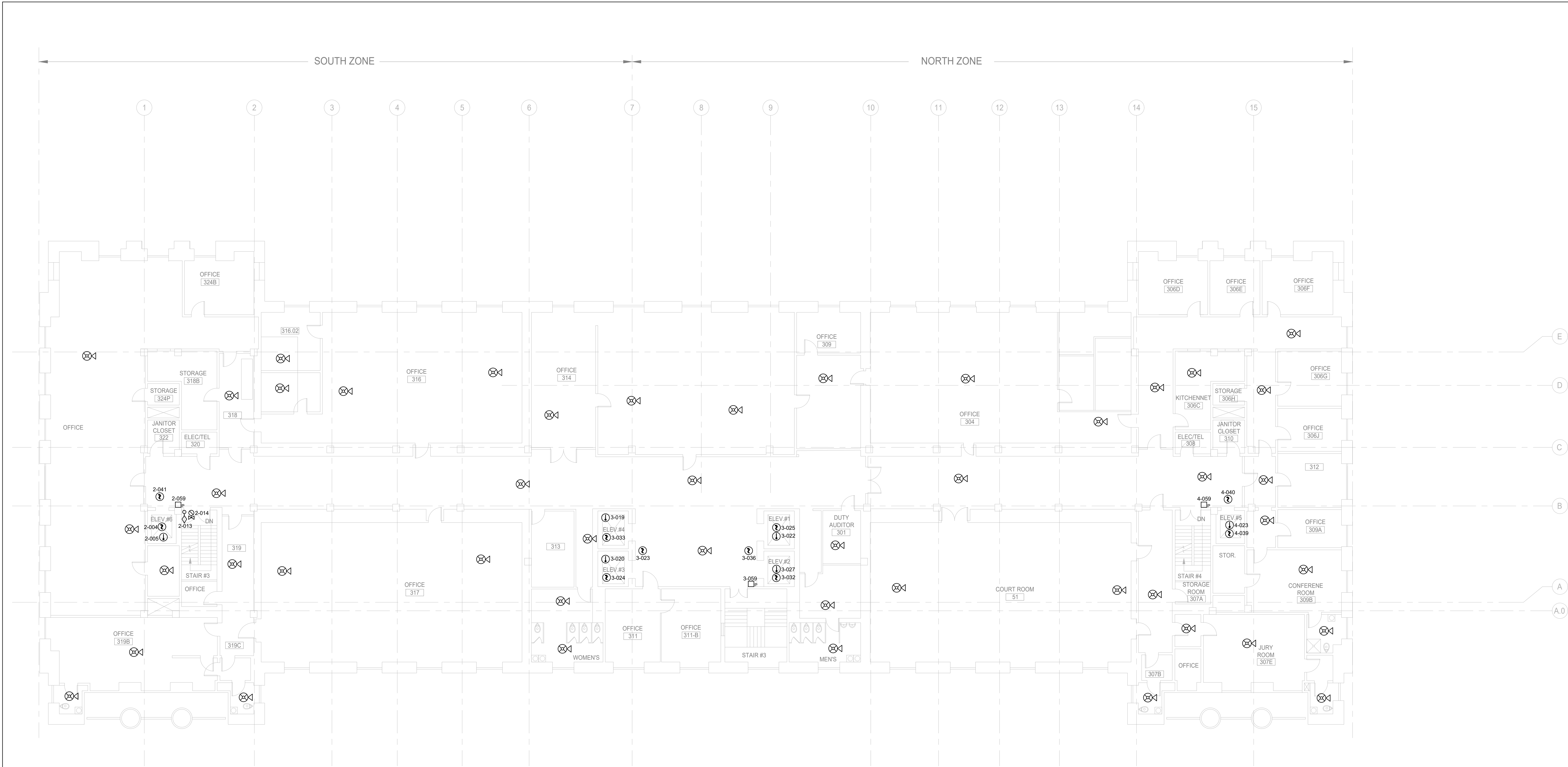
DRAWING NO.  
**FA 102**

SCALE: 1 : 125

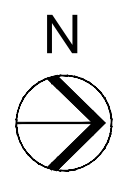
DATE: 11/30/2023

DES: KS	DRAWN: NS	CHECKED: HU
---------	-----------	-------------





1 FIRE ALARM THIRD FLOOR PLAN  
SCALE: 1 : 125



LEGEND:

- [FCP] FIRE ALARM CONTROL PANEL
- [FPR] FIRE PUMP RUN
- [FPF] FIRE PUMP FAULT
- [FPO] FIRE PUMP OFF
- [FPRAPS] FIRE PUMP RUN ALT POWER SOURCE
- [IAM] FIRE ALARM INTERFACE MODULES
- [GENR] GENERATOR RUN
- [GENF] GENERATOR FAULT
- [TRN] TURNSTILES
- [PRI] PRIMARY RECALL
- [ALT] ALTERNATIVE RECALL
- [HAT] FIREMANS HAT
- [REL] RELAY MODULE
- [ST] SHUNT TRIP
- [P] MANUAL PULL STATION
- [S] WALL MOUNTED SPEAKER, M.H. 80" AFF
- [S/S] WALL MOUNTED SPEAKER/ STROBE, M.H. 80" AFF
- [C] CEILING MOUNTED SPEAKER
- [C/S] WALL MOUNTED STORBE, M.H. 80"AFF
- [C/S/S] CEILING MOUNTED SPEAKER AND STROBE
- [C/S] CEILING MOUNTED STROBE
- [S] SMOKE DETECTOR
- [S] DUCT SMOKE DETETOR
- [H] HEAT DETECTOR
- [V] VALVE TAMPER SWITCH
- [F] FLOW SWITCH
- [P] ALARM PRESSURE SWITCH
- [H/L] HIGH / LOW PRESSURE SWITCH
- [P] FIELD PHOTOGRAPH

CLIENT INFORMATION



SUPERIOR COURT OF THE  
DISTRICT OF COLUMBIA

PROJECT TITLE

FIRE ALARM RISER & FLOOR PLANS  
AS-BUILTS

PROJECT LOCATION

DC SUPERIOR COURT PROBATE  
DIVISION - BUILDING A

SEAL & SIGNATURE

PROFESSIONAL CERTIFICATION:  
I HEREBY CERTIFY THAT THESE DOCUMENTS WERE  
PREPARED OR APPROVED BY ME, AND THAT I AM A DULY  
LICENSED PROFESSIONAL ENGINEER UNDER THE LAWS OF  
THE STATE OF MARYLAND, LICENSE NO. \_\_\_\_\_  
EXPIRATION DATE: \_\_\_\_\_



Creative Designs | Intelligent Solutions

**ASTUTE ENGINEERING, PLLC.**  
1945 OLD GALLOW'S ROAD, STE 201, VIENNA, VA 22182  
PH: (202) 400-2004 | WWW.ASTUTENG.COM

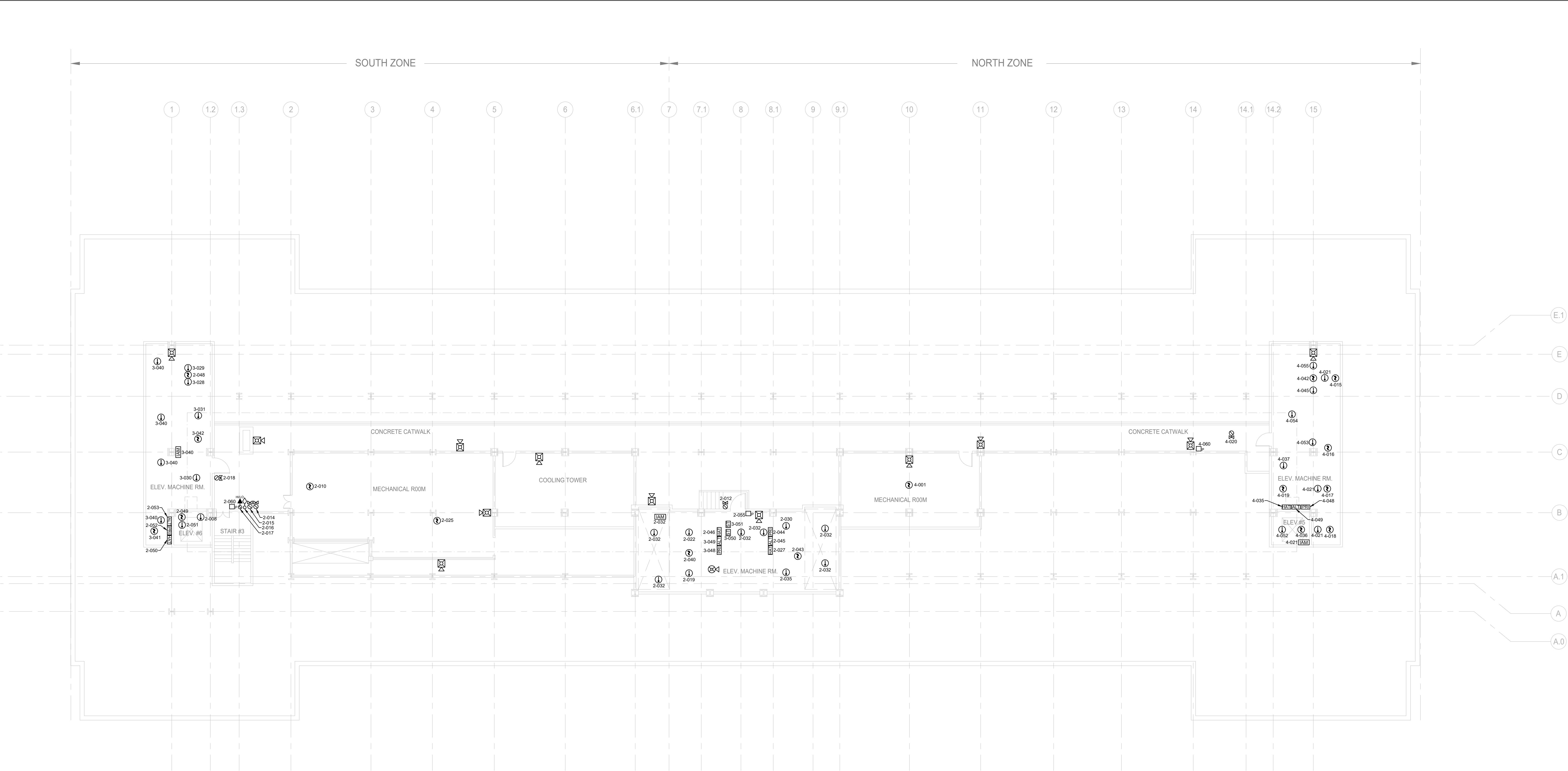
FOR REVIEW ONLY

REVISIONS		
NO.	DESCRIPTION	DATE

TITLE  
THIRD FLOOR FIRE  
ALARM SYSTEM  
AS-BUILT


DRAWING NO.  
FA103

SCALE: 1 : 125		
DATE: 11/30/2023		
DES: KS	DRAWN: NS	CHECKED: HU



1 FIRE ALARM PENTHOUSE FLOOR PLAN  
SCALE: 1 : 125

- LEGEND:**
- [FCP] FIRE ALARM CONTROL PANEL
  - [FPR] FIRE PUMP RUN
  - [FPF] FIRE PUMP FAULT
  - [FPO] FIRE PUMP OFF
  - [FPRAPS] FIRE PUMP RUN ALT POWER SOURCE
  - [IAM] FIRE ALARM INTERFACE MODULES
  - [GENR] GENERATOR RUN
  - [GENF] GENERATOR FAULT
  - [TRN] TURNSTILES
  - [PRI] PRIMARY RECALL
  - [ALT] ALTERNATIVE RECALL
  - [HAT] FIREMANS HAT
  - [REL] RELAY MODULE
  - [ST] SHUNT TRIP
  - [P] MANUAL PULL STATION
  - [Speaker Symbol] WALL MOUNTED SPEAKER, M.H. 80" AFF
  - [Strobe Symbol] WALL MOUNTED SPEAKER/ STROBE, M.H. 80" AFF
  - [Circle Symbol] CEILING MOUNTED SPEAKER
  - [Dashed Circle Symbol] WALL MOUNTED STORBE, M.H. 80"AFF
  - [Crossed Circle Symbol] CEILING MOUNTED SPEAKER AND STROBE
  - [X Symbol] CEILING MOUNTED STROBE
  - [Question Mark Symbol] SMOKE DETECTOR
  - [Question Mark in Box Symbol] DUCT SMOKE DETETOR
  - [Thermometer Symbol] HEAT DETECTOR
  - [Valve Symbol] VALVE TAMPER SWITCH
  - [Diamond Symbol] FLOW SWITCH
  - [Arrow Symbol] ALARM PRESSURE SWITCH
  - [Circle with Arrow Symbol] HIGH / LOW PRESSURE SWITCH
  - [Field Photo Symbol] FIELD PHOTOGRAPH



**SUPERIOR COURT OF THE DISTRICT OF COLUMBIA**

PROJECT TITLE


FIRE ALARM RISER & FLOOR PLANS  
AS-BUILTS

PROJECT LOCATION

DC SUPERIOR COURT PROBATE  
DIVISION - BUILDING A

SEAL & SIGNATURE

PROFESSIONAL CERTIFICATION:  
( I HEREBY CERTIFY THAT THESE DOCUMENTS WERE  
PREPARED OR APPROVED BY ME, AND THAT I AM A DULY  
LICENSED PROFESSIONAL ENGINEER UNDER THE LAWS OF  
THE STATE OF MARYLAND, LICENSE NO. \_\_\_\_\_  
EXPIRATION DATE: \_\_\_\_\_



**ASTUTE ENGINEERING, PLLC.**  
1945 OLD GALLOWS ROAD, STE 201, VIENNA, VA 22182  
PH: (202) 400-2004 | WWW.ASTUTENG.COM

FOR REVIEW ONLY

REVISIONS		
NO.	DESCRIPTION	DATE

TITLE

PENTHOUSE FLOOR FIRE  
ALARM SYSTEM  
AS-BUILT

DRAWING NO.  
FA104

SCALE: 1 : 125

DATE: 11/30/2023

DES: KS

DRAWN: NS

CHECKED: HU