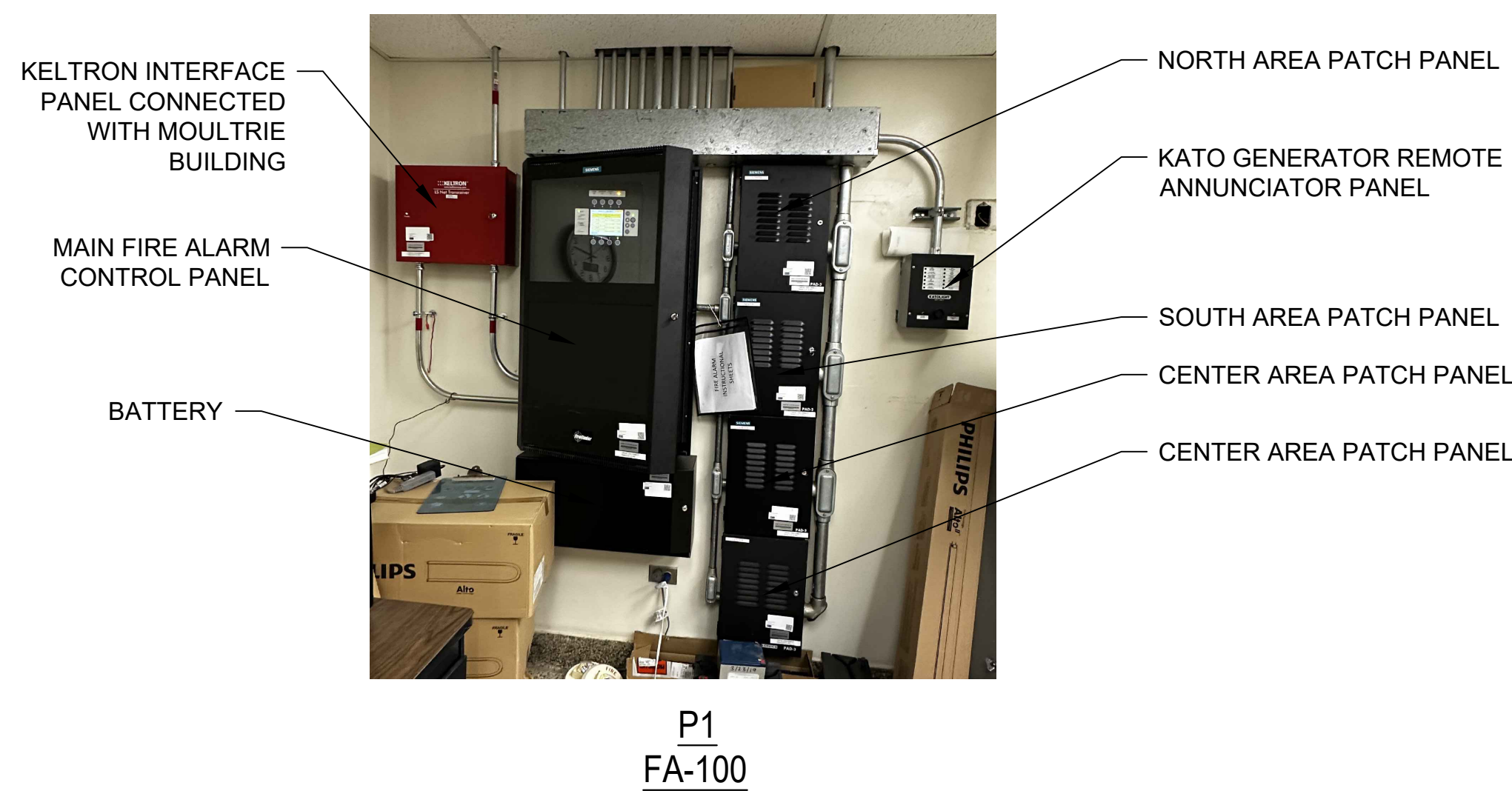


1 FIRE ALARM SYSTEM BASEMENT FLOOR PLAN  
SCALE: 1 : 125



LEGEND:

- FCP FIRE ALARM CONTROL PANEL
- FPR FIRE PUMP RUN
- FPF FIRE PUMP FAULT
- FPO FIRE PUMP OFF
- FPRAPS FIRE PUMP RUN ALT POWER SOURCE
- IAM FIRE ALARM INTERFACE MODULES
- GENR GENERATOR RUN
- GENF GENERATOR FAULT
- PRI PRIMARY RECALL
- ALT ALTERNATIVE RECALL
- HAT FIREMANS HAT
- REL RELAY MODULE
- ST SHUNT TRIP
- P MANUAL PULL STATION
- WS WALL MOUNTED SPEAKER, M.H. 80" AFF
- WMS WALL MOUNTED SPEAKER/ STROBE, M.H. 80" AFF
- CWS CEILING MOUNTED SPEAKER
- CMS CEILING MOUNTED SPEAKER AND STROBE
- CS CEILING MOUNTED STROBE
- SD SMOKE DETECTOR
- DSD DUCT SMOKE DETECTOR
- HD HEAT DETECTOR
- VTS VALVE TAMPER SWITCH
- FS FLOW SWITCH
- APS ALARM PRESSURE SWITCH
- HPS HIGH / LOW PRESSURE SWITCH
- FP FIELD PHOTOGRAPH

CLIENT INFORMATION



SUPERIOR COURT OF THE  
DISTRICT OF COLUMBIA

PROJECT TITLE

FIRE ALARM RISER & FLOOR PLANS  
AS-BUILTS

PROJECT LOCATION

DISTRICT OF COLUMBIA COURTS - LANDLORD  
AND TENANT BRANCH - BUILDING B

SEAL & SIGNATURE

PROFESSIONAL CERTIFICATION:  
I HEREBY CERTIFY THAT THESE DOCUMENTS WERE  
PREPARED OR APPROVED BY ME, AND THAT I AM A DULY  
LICENSED PROFESSIONAL ENGINEER UNDER THE LAWS OF  
THE STATE OF MARYLAND, LICENSE NO. \_\_\_\_\_  
EXPIRATION DATE: \_\_\_\_\_



ASTUTE ENGINEERING, PLLC.  
1945 OLD GALLOW'S ROAD, STE 201, VIENNA, VA 22182  
PH: (202) 400-2004 | WWW.ASTUTENG.COM

FOR REVIEW ONLY

REVISIONS		
NO.	DESCRIPTION	DATE

TITLE  
BASEMENT FLOOR FIRE  
ALARM SYSTEM  
AS-BUILT

DRAWING NO.  
FA 100

SCALE: 1 : 125

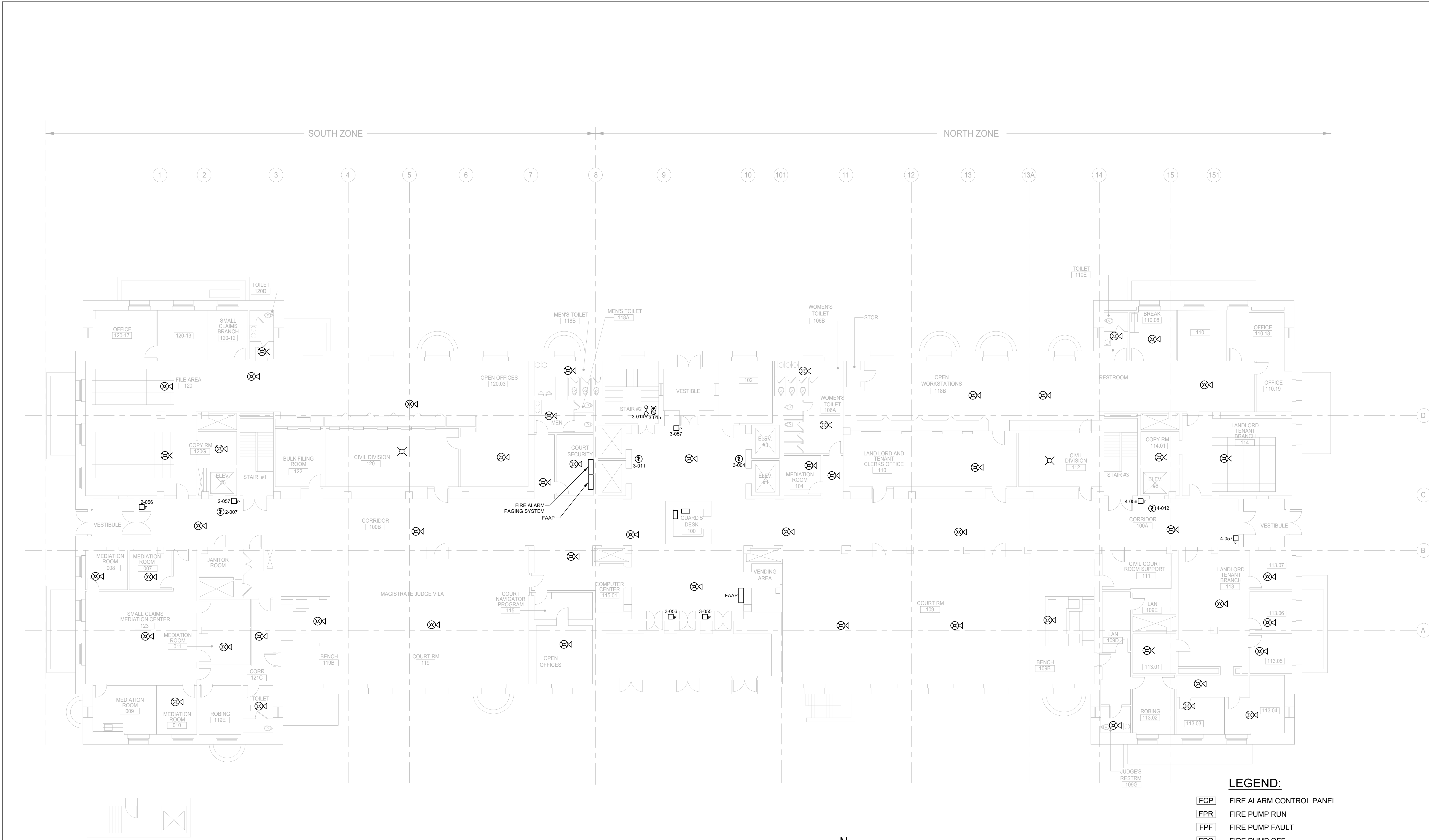
DATE: 11/29/2023

DES: KS

DRAWN: NS

CHECKED: HU






1 FIRE ALARM SYSTEM FIRST FLOOR PLAN  
SCALE: 1 : 125

- LEGEND:**
- [FCP] FIRE ALARM CONTROL PANEL
  - [FPR] FIRE PUMP RUN
  - [FPF] FIRE PUMP FAULT
  - [FPO] FIRE PUMP OFF
  - [FPRAPS] FIRE PUMP RUN ALT POWER SOURCE
  - [IAM] FIRE ALARM INTERFACE MODULES
  - [GENR] GENERATOR RUN
  - [GENF] GENERATOR FAULT
  - [PRI] PRIMARY RECALL
  - [ALT] ALTERNATIVE RECALL
  - [HAT] FIREMANS HAT
  - [REL] RELAY MODULE
  - [ST] SHUNT TRIP
  - [P] MANUAL PULL STATION
  - [S] WALL MOUNTED SPEAKER, M.H. 80" AFF
  - [S] WALL MOUNTED STORBE, M.H. 80" AFF
  - [S] CEILING MOUNTED SPEAKER
  - [S] WALL MOUNTED STORBE, M.H. 80" AFF
  - [S] CEILING MOUNTED SPEAKER AND STROBE
  - [S] CEILING MOUNTED STROBE
  - [S] SMOKE DETECTOR
  - [S] DUCT SMOKE DETECTOR
  - [S] HEAT DETECTOR
  - [S] VALVE TAMPER SWITCH
  - [S] FLOW SWITCH
  - [S] ALARM PRESSURE SWITCH
  - [S] HIGH / LOW PRESSURE SWITCH
  - [S] FIELD PHOTOGRAPH

CLIENT INFORMATION



**SUPERIOR COURT OF THE DISTRICT OF COLUMBIA**

PROJECT TITLE

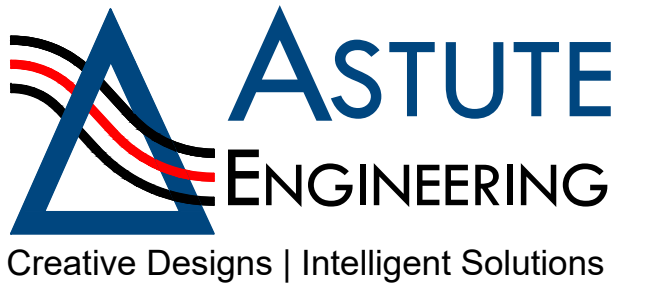
FIRE ALARM RISER & FLOOR PLANS  
AS-BUILTS

PROJECT LOCATION

DISTRICT OF COLUMBIA COURTS - LANDLORD  
AND TENANT BRANCH - BUILDING B

SEAL & SIGNATURE

PROFESSIONAL CERTIFICATION:  
I HEREBY CERTIFY THAT THESE DOCUMENTS WERE  
PREPARED OR APPROVED BY ME, AND THAT I AM A DULY  
LICENSED PROFESSIONAL ENGINEER UNDER THE LAWS OF  
THE STATE OF MARYLAND, LICENSE NO. \_\_\_\_\_  
EXPIRATION DATE: \_\_\_\_\_



**ASTUTE ENGINEERING, PLLC.**  
1945 OLD GALLOW'S ROAD, STE 201, VIENNA, VA 22182  
PH: (202) 400-2004 | WWW.ASTUTENG.COM

FOR REVIEW ONLY

REVISIONS		
NO.	DESCRIPTION	DATE

TITLE

**FIRST FLOOR FIRE ALARM SYSTEM  
AS-BUILT**

DRAWING NO.

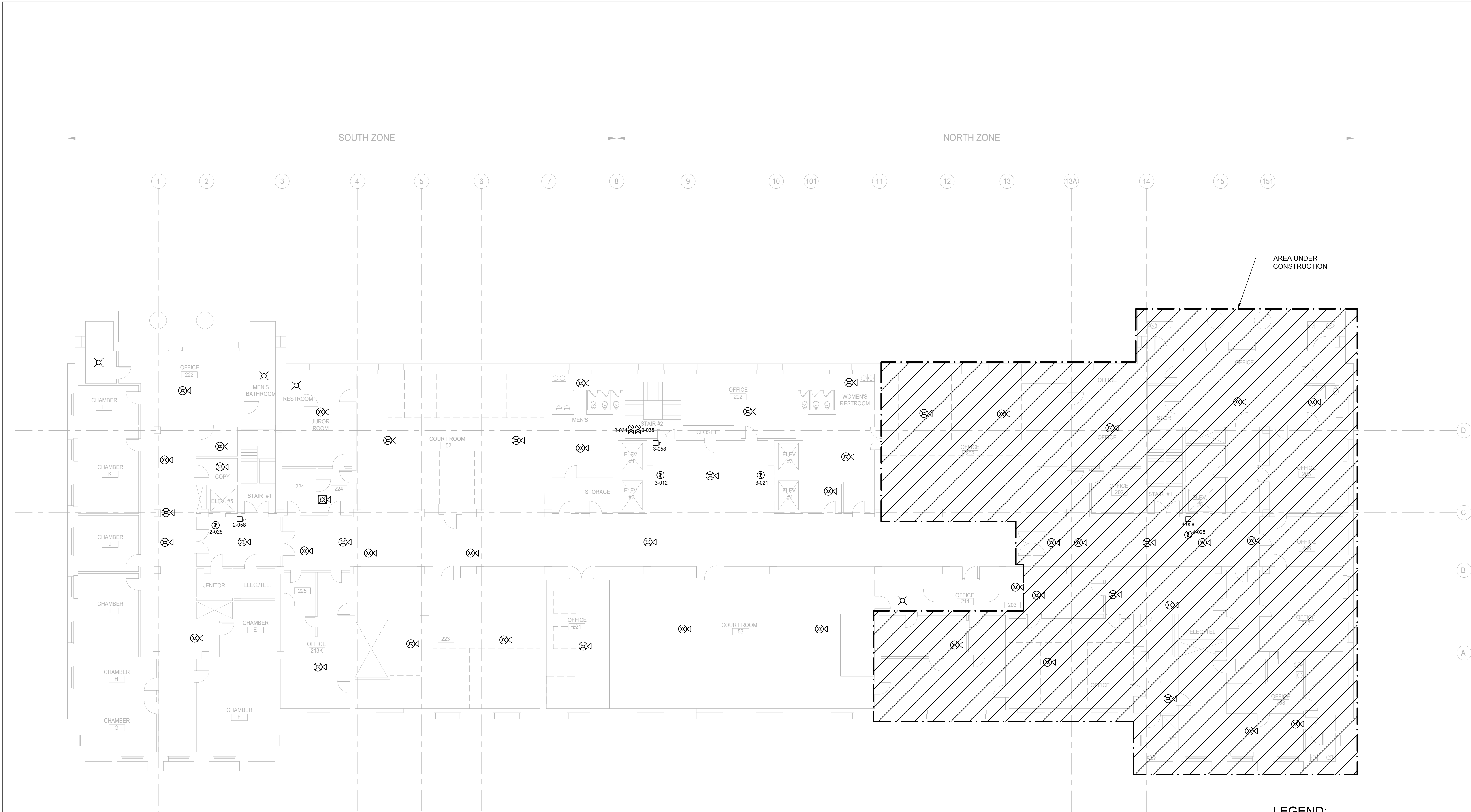
**FA101**

SCALE: 1 : 125

DATE: 11/29/2023

DES: KS	DRAWN: NS	CHECKED: HU
---------	-----------	-------------






1 FIRE ALARM SYSTEM SECOND FLOOR PLAN  
SCALE: 1 : 125

- LEGEND:**
- FCP FIRE ALARM CONTROL PANEL
  - FPR FIRE PUMP RUN
  - FPF FIRE PUMP FAULT
  - FPO FIRE PUMP OFF
  - FPRAPS FIRE PUMP RUN ALT POWER SOURCE
  - IAM FIRE ALARM INTERFACE MODULES
  - GENR GENERATOR RUN
  - GENF GENERATOR FAULT
  - PRI PRIMARY RECALL
  - ALT ALTERNATIVE RECALL
  - HAT FIREMANS HAT
  - REL RELAY MODULE
  - ST SHUNT TRIP
  - P MANUAL PULL STATION
  - WALL MOUNTED SPEAKER, M.H. 80" AFF
  - WALL MOUNTED SPEAKER/ STROBE, M.H. 80" AFF
  - CEILING MOUNTED SPEAKER
  - WALL MOUNTED STORBE, M.H. 80" AFF
  - CEILING MOUNTED SPEAKER AND STROBE
  - CEILING MOUNTED STROBE
  - SMOKE DETECTOR
  - DUCT SMOKE DETETOR
  - HEAT DETECTOR
  - VALVE TAMPER SWITCH
  - FLOW SWITCH
  - ALARM PRESSURE SWITCH
  - HIGH / LOW PRESSURE SWITCH
  - FIELD PHOTOGRAPH

CLIENT INFORMATION



SUPERIOR COURT OF THE DISTRICT OF COLUMBIA

PROJECT TITLE


FIRE ALARM RISER & FLOOR PLANS AS-BUILTS

PROJECT LOCATION

DISTRICT OF COLUMBIA COURTS - LANDLORD AND TENANT BRANCH - BUILDING B

SEAL & SIGNATURE

PROFESSIONAL CERTIFICATION:  
I HEREBY CERTIFY THAT THESE DOCUMENTS WERE PREPARED OR APPROVED BY ME, AND THAT I AM A DULY LICENSED PROFESSIONAL ENGINEER UNDER THE LAWS OF THE STATE OF MARYLAND, LICENSE NO. \_\_\_\_\_ EXPIRATION DATE: \_\_\_\_\_



**ASTUTE ENGINEERING, PLLC.**  
1945 OLD GALLOW'S ROAD, STE 201, VIENNA, VA 22182  
PH: (202) 400-2004 | WWW.ASTUTENG.COM

FOR REVIEW ONLY

REVISIONS		
NO.	DESCRIPTION	DATE

TITLE

SECOND FLOOR FIRE ALARM SYSTEM AS-BUILT

DRAWING NO.

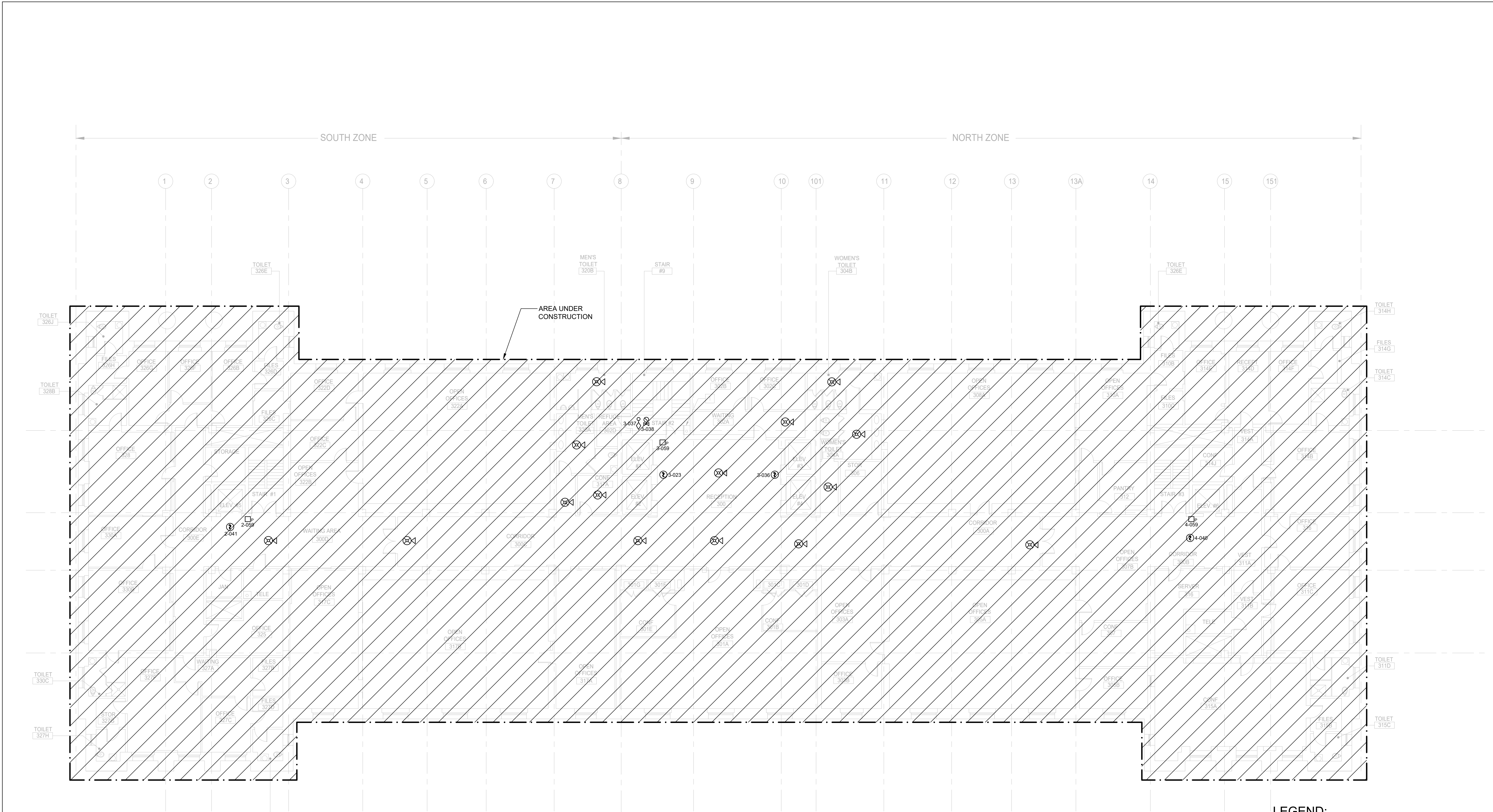
FA 102

SCALE: 1 : 125

DATE: 11/29/2023

DES: KS    DRAWN: NS    CHECKED: HU





1 FIRE ALARM SYSTEM THIRD FLOOR PLAN  
SCALE: 1 : 125



LEGEND:

- [FCP] FIRE ALARM CONTROL PANEL
- [FPR] FIRE PUMP RUN
- [FPF] FIRE PUMP FAULT
- [FPO] FIRE PUMP OFF
- [FPRAPS] FIRE PUMP RUN ALT POWER SOURCE
- [IAM] FIRE ALARM INTERFACE MODULES
- [GENR] GENERATOR RUN
- [GENF] GENERATOR FAULT
- [PRI] PRIMARY RECALL
- [ALT] ALTERNATIVE RECALL
- [HAT] FIREMANS HAT
- [REL] RELAY MODULE
- [ST] SHUNT TRIP
- [P] MANUAL PULL STATION
- [S] WALL MOUNTED SPEAKER, M.H. 80" AFF
- [S/S] WALL MOUNTED SPEAKER/ STROBE, M.H. 80" AFF
- [C] CEILING MOUNTED SPEAKER
- [S/S] WALL MOUNTED STORBE, M.H. 80"AFF
- [S/S] CEILING MOUNTED SPEAKER AND STROBE
- [S] CEILING MOUNTED STROBE
- [S] SMOKE DETECTOR
- [S] DUCT SMOKE DETETOR
- [S] HEAT DETECTOR
- [S] VALVE TAMPER SWITCH
- [S] FLOW SWITCH
- [S] ALARM PRESSURE SWITCH
- [S] HIGH / LOW PRESSURE SWITCH
- [S] FIELD PHOTOGRAPH

CLIENT INFORMATION



SUPERIOR COURT OF THE  
DISTRICT OF COLUMBIA

PROJECT TITLE

FIRE ALARM RISER & FLOOR PLANS  
AS-BUILTS

PROJECT LOCATION

DISTRICT OF COLUMBIA COURTS - LANDLORD  
AND TENANT BRANCH - BUILDING B

SEAL & SIGNATURE

PROFESSIONAL CERTIFICATION:  
I HEREBY CERTIFY THAT THESE DOCUMENTS WERE  
PREPARED OR APPROVED BY ME, AND THAT I AM A DULY  
LICENSED PROFESSIONAL ENGINEER UNDER THE LAWS OF  
THE STATE OF MARYLAND, LICENSE NO. \_\_\_\_\_  
EXPIRATION DATE: \_\_\_\_\_



**ASTUTE ENGINEERING, PLLC.**  
1945 OLD GALLOW'S ROAD, STE 201, VIENNA, VA 22182  
PH: (202) 400-2004 | WWW.ASTUTENG.COM

FOR REVIEW ONLY

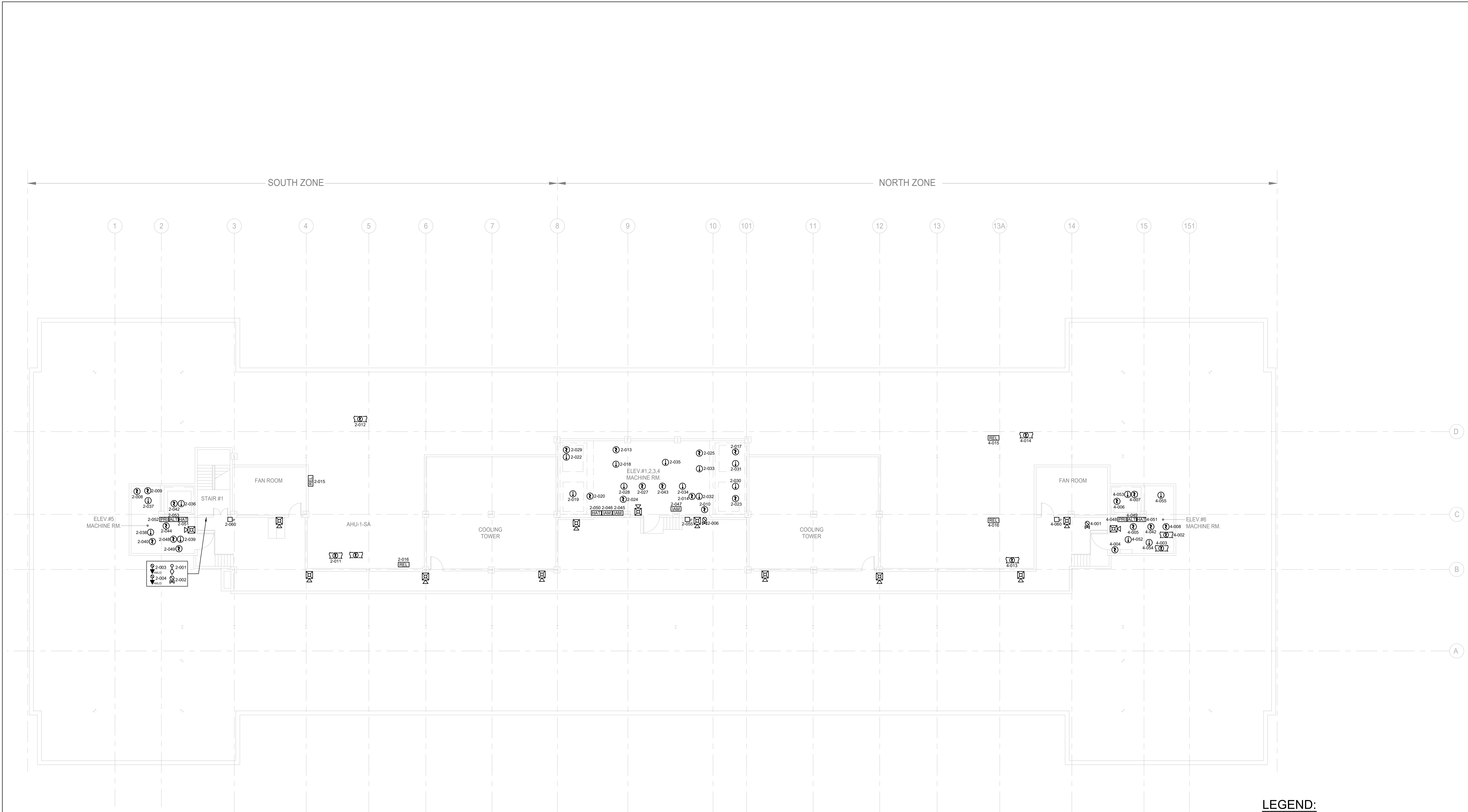
REVISIONS		
NO.	DESCRIPTION	DATE

TITLE  
THIRD FLOOR FIRE  
ALARM SYSTEM  
AS-BUILT

DRAWING NO.  
FA103

SCALE: 1 : 125		
DATE: 11/29/2023		
DES: KS	DRAWN: NS	CHECKED: HU





1 FIRE ALARM SYSTEM PANTHOUSE FLOOR PLAN  
SCALE: 1 : 125

- LEGEND:**
- [FCP] FIRE ALARM CONTROL PANEL
  - [FPR] FIRE PUMP RUN
  - [FPF] FIRE PUMP FAULT
  - [FPO] FIRE PUMP OFF
  - [FPRAPS] FIRE PUMP RUN ALT POWER SOURCE
  - [IAM] FIRE ALARM INTERFACE MODULES
  - [GENR] GENERATOR RUN
  - [GENF] GENERATOR FAULT
  - [PRI] PRIMARY RECALL
  - [ALT] ALTERNATIVE RECALL
  - [HAT] FIREMANS HAT
  - [REL] RELAY MODULE
  - [ST] SHUNT TRIP
  - [P] MANUAL PULL STATION
  - [S] WALL MOUNTED SPEAKER, M.H. 80" AFF
  - [S] WALL MOUNTED SPEAKER/ STROBE, M.H. 80" AFF
  - [S] CEILING MOUNTED SPEAKER
  - [S] WALL MOUNTED STORBE, M.H. 80"AFF
  - [S] CEILING MOUNTED SPEAKER AND STROBE
  - [S] CEILING MOUNTED STROBE
  - [S] SMOKE DETECTOR
  - [S] DUCT SMOKE DETETOR
  - [S] HEAT DETECTOR
  - [S] VALVE TAMPER SWITCH
  - [S] FLOW SWITCH
  - [S] ALARM PRESSURE SWITCH
  - [S] HIGH / LOW PRESSURE SWITCH
  - [S] FIELD PHOTOGRAPH

CLIENT INFORMATION



SUPERIOR COURT OF THE DISTRICT OF COLUMBIA

PROJECT TITLE

FIRE ALARM RISER & FLOOR PLANS AS-BUILTS

PROJECT LOCATION

DISTRICT OF COLUMBIA COURTS - LANDLORD AND TENANT BRANCH - BUILDING B

SEAL & SIGNATURE

PROFESSIONAL CERTIFICATION:  
I HEREBY CERTIFY THAT THESE DOCUMENTS WERE PREPARED OR APPROVED BY ME, AND THAT I AM A DULY LICENSED PROFESSIONAL ENGINEER UNDER THE LAWS OF THE STATE OF MARYLAND, LICENSE NO. \_\_\_\_\_ EXPIRATION DATE: \_\_\_\_\_



**ASTUTE ENGINEERING, PLLC.**  
1945 OLD GALLOW'S ROAD, STE 201, VIENNA, VA 22182  
PH: (202) 400-2004 | WWW.ASTUTENG.COM

FOR REVIEW ONLY

REVISIONS		
NO.	DESCRIPTION	DATE

TITLE

PENTHOUSE FLOOR FIRE ALARM SYSTEM AS-BUILT

DRAWING NO.

FA104

SCALE: 1 : 125

DATE: 11/29/2023

DES: KS

DRAWN: NS

CHECKED: HU