

1 FIRE ALARM SYSTEM BASEMENT FLOOR PLAN  
SCALE: 1/8"=1'-0"

- LEGEND:**
- FCP FIRE ALARM CONTROL PANEL
  - GFAA FIRE ALARM ANNUNCIATOR
  - NAC NOTIFICATION APPLIANCE CONTROLLER
  - FPR FIRE PUMP RUN
  - FPF FIRE PUMP FAULT
  - FPO FIRE PUMP OFF
  - FPRAPS FIRE PUMP RUN ALT POWER SOURCE
  - IAM FIRE ALARM INTERFACE MODULES
  - GENR GENERATOR RUN
  - GENF GENERATOR FAULT
  - PRI PRIMARY RECALL
  - SRI SECONDARY RECALL
  - ALT ALTERNATIVE RECALL
  - HAT FIREMANS HAT
  - REL RELAY MODULE
  - ST SHUNT TRIP
  - P MANUAL PULL STATION
  - CA MANUAL PULL STATION - CLEAN AGENT SYSTEM
  - WALL MOUNTED SPEAKER, M.H. 80" AFF
  - WALL MOUNTED SPEAKER/ STROBE, M.H. 80" AFF
  - CEILING MOUNTED SPEAKER
  - WALL MOUNTED STORBE, M.H. 80"AFF
  - CEILING MOUNTED SPEAKER AND STROBE
  - CEILING MOUNTED STROBE
  - SMOKE DETECTOR
  - CA SMOKE DETECTOR - CLEAN AGENT SYSTEM
  - DUCT SMOKE DETETOR
  - HEAT DETECTOR
  - VALVE TAMPER SWITCH
  - FLOW SWITCH
  - ALARM PRESSURE SWITCH
  - HIGH / LOW PRESSURE SWITCH
  - FIRE ALARM BELL
  - FIELD PHOTOGRAPH

CLIENT INFORMATION



SUPERIOR COURT OF THE  
DISTRICT OF COLUMBIA

PROJECT TITLE

FIRE ALARM RISER & FLOOR PLANS  
AS-BUILTS

PROJECT LOCATION

BUILDING C

SEAL & SIGNATURE

PROFESSIONAL CERTIFICATION:  
I HEREBY CERTIFY THAT THESE DOCUMENTS WERE  
PREPARED OR APPROVED BY ME, AND THAT I AM A DULY  
LICENSED PROFESSIONAL ENGINEER UNDER THE LAWS OF  
THE STATE OF MARYLAND, LICENSE NO. \_\_\_\_\_  
EXPIRATION DATE: \_\_\_\_\_



**ASTUTE ENGINEERING, PLLC.**  
1945 OLD GALLOW'S ROAD, STE 201, VIENNA, VA 22182  
PH: (202) 400-2004 | WWW.ASTUTENG.COM

FOR REVIEW ONLY

REVISIONS		
NO.	DESCRIPTION	DATE

TITLE  
BASEMENT FLOOR FIRE  
ALARM SYSTEM  
AS-BUILT

DRAWING NO.  
FA 100

SCALE: 1/8"=1'-0"

DATE: 12/20/2023

DES: KS

DRAWN: NS

CHECKED: HU





1 FIRE ALARM SYSTEM FIRST FLOOR PLAN  
SCALE: 1/8"=1'-0"



P1  
FA-101



P2  
FA-101

- LEGEND:**
- FCP FIRE ALARM CONTROL PANEL
  - GFAA FIRE ALARM ANNUNCIATOR
  - NAC NOTIFICATION APPLIANCE CONTROLLER
  - FPR FIRE PUMP RUN
  - FPF FIRE PUMP FAULT
  - FPO FIRE PUMP OFF
  - FPRAPS FIRE PUMP RUN ALT POWER SOURCE
  - IAM FIRE ALARM INTERFACE MODULES
  - GENR GENERATOR RUN
  - GENF GENERATOR FAULT
  - PRI PRIMARY RECALL
  - SRI SECONDARY RECALL
  - ALT ALTERNATIVE RECALL
  - HAT FIREMANS HAT
  - REL RELAY MODULE
  - ST SHUNT TRIP
  - P MANUAL PULL STATION
  - CA MANUAL PULL STATION - CLEAN AGENT SYSTEM
  - WALL MOUNTED SPEAKER, M.H. 80" AFF
  - WALL MOUNTED SPEAKER/ STROBE, M.H. 80" AFF
  - CEILING MOUNTED SPEAKER
  - WALL MOUNTED STORBE, M.H. 80" AFF
  - CEILING MOUNTED SPEAKER AND STROBE
  - CEILING MOUNTED STROBE
  - SMOKE DETECTOR
  - CA SMOKE DETECTOR - CLEAN AGENT SYSTEM
  - DUCT SMOKE DETECTOR
  - HEAT DETECTOR
  - VALVE TAMPER SWITCH
  - FLOW SWITCH
  - ALARM PRESSURE SWITCH
  - HIGH / LOW PRESSURE SWITCH
  - FIRE ALARM BELL
  - FIELD PHOTOGRAPH

CLIENT INFORMATION



SUPERIOR COURT OF THE  
DISTRICT OF COLUMBIA

PROJECT TITLE

FIRE ALARM RISER & FLOOR PLANS  
AS-BUILTS

PROJECT LOCATION

BUILDING C

SEAL & SIGNATURE

PROFESSIONAL CERTIFICATION:  
I HEREBY CERTIFY THAT THESE DOCUMENTS WERE  
PREPARED OR APPROVED BY ME, AND THAT I AM A DULY  
LICENSED PROFESSIONAL ENGINEER UNDER THE LAWS OF  
THE STATE OF MARYLAND, LICENSE NO. \_\_\_\_\_  
EXPIRATION DATE: \_\_\_\_\_



**ASTUTE ENGINEERING, PLLC.**  
1945 OLD GALLOW'S ROAD, STE 201, VIENNA, VA 22182  
PH: (202) 400-2004 | WWW.ASTUTENG.COM

FOR REVIEW ONLY

REVISIONS		
NO.	DESCRIPTION	DATE

TITLE  
FIRST FLOOR FIRE  
ALARM SYSTEM  
AS-BUILT

DRAWING NO.  
FA101

SCALE: 1/8"=1'-0"

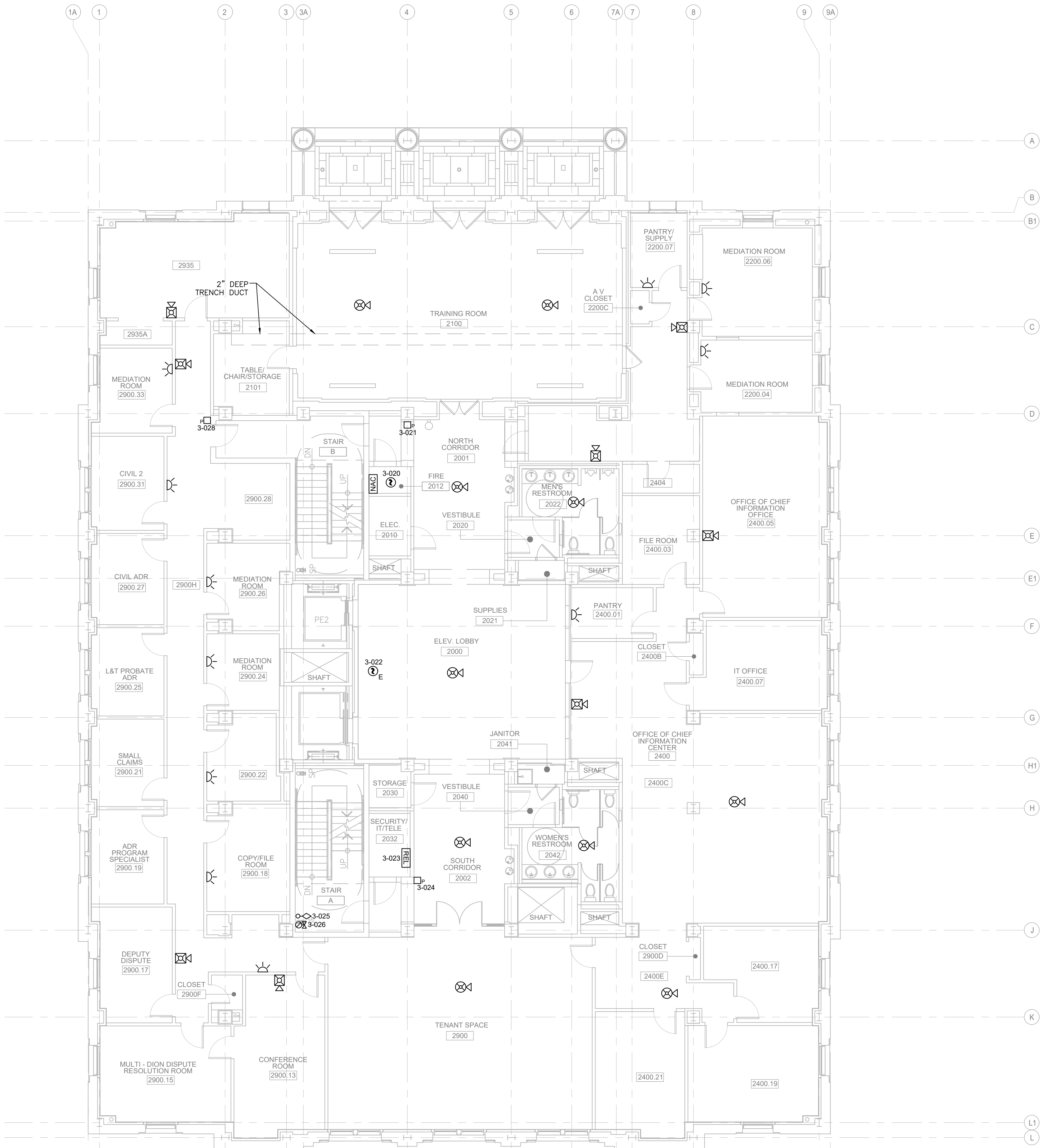
DATE: 12/20/2023

DES: KS

DRAWN: NS

CHECKED: HU





**1 FIRE ALARM SYSTEM SECOND FLOOR PLAN**  
SCALE: 1/8"=1'-0"

- LEGEND:**
- [FCP] FIRE ALARM CONTROL PANEL
  - [GFAA] FIRE ALARM ANNUNCIATOR
  - [NAC] NOTIFICATION APPLIANCE CONTROLLER
  - [FPR] FIRE PUMP RUN
  - [FPF] FIRE PUMP FAULT
  - [FPO] FIRE PUMP OFF
  - [FPRAPS] FIRE PUMP RUN ALT POWER SOURCE
  - [IAM] FIRE ALARM INTERFACE MODULES
  - [GENR] GENERATOR RUN
  - [GENF] GENERATOR FAULT
  - [PRI] PRIMARY RECALL
  - [SRI] SECONDARY RECALL
  - [ALT] ALTERNATIVE RECALL
  - [HAT] FIREMANS HAT
  - [REL] RELAY MODULE
  - [ST] SHUNT TRIP
  - [P] MANUAL PULL STATION
  - [P CA] MANUAL PULL STATION - CLEAN AGENT SYSTEM
  - [S] WALL MOUNTED SPEAKER, M.H. 80" AFF
  - [S S] WALL MOUNTED SPEAKER/ STROBE, M.H. 80" AFF
  - [S C] CEILING MOUNTED SPEAKER
  - [S S C] WALL MOUNTED STORBE, M.H. 80"AFF
  - [S S C S] CEILING MOUNTED SPEAKER AND STROBE
  - [S S C S S] CEILING MOUNTED STROBE
  - [S D] SMOKE DETECTOR
  - [S D CA] SMOKE DETECTOR - CLEAN AGENT SYSTEM
  - [S D S] DUCT SMOKE DETECTOR
  - [S H] HEAT DETECTOR
  - [S V] VALVE TAMPER SWITCH
  - [S F] FLOW SWITCH
  - [S P] ALARM PRESSURE SWITCH
  - [S H/L] HIGH / LOW PRESSURE SWITCH
  - [S B] FIRE ALARM BELL
  - [S P] FIELD PHOTOGRAPH

CLIENT INFORMATION



SUPERIOR COURT OF THE  
DISTRICT OF COLUMBIA

PROJECT TITLE

FIRE ALARM RISER & FLOOR PLANS  
AS-BUILTS

PROJECT LOCATION

BUILDING C

SEAL & SIGNATURE

PROFESSIONAL CERTIFICATION:  
I HEREBY CERTIFY THAT THESE DOCUMENTS WERE  
PREPARED OR APPROVED BY ME, AND THAT I AM A DULY  
LICENSED PROFESSIONAL ENGINEER UNDER THE LAWS OF  
THE STATE OF MARYLAND, LICENSE NO. \_\_\_\_\_  
EXPIRATION DATE: \_\_\_\_\_



**ASTUTE ENGINEERING, PLLC.**  
1945 OLD GALLOW'S ROAD, STE 201, VIENNA, VA 22182  
PH: (202) 400-2004 | WWW.ASTUTENG.COM

FOR REVIEW ONLY

REVISIONS		
NO.	DESCRIPTION	DATE

TITLE  
SECOND FLOOR FIRE  
ALARM SYSTEM  
AS-BUILT

DRAWING NO.  
FA 102

SCALE: 1/8"=1'-0"

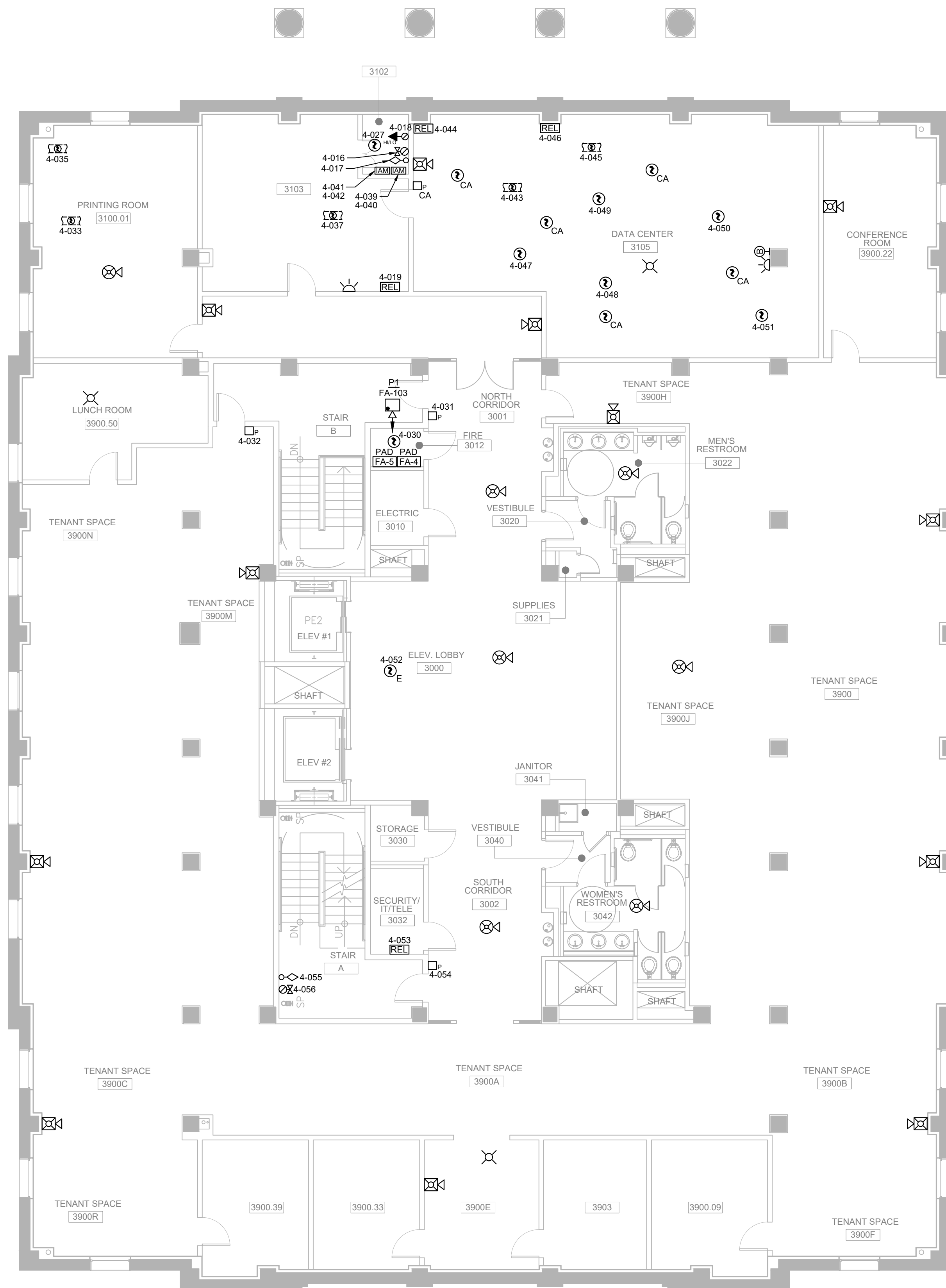
DATE: 12/20/2023

DES: KS

DRAWN: NS

CHECKED: HU





1 FIRE ALARM SYSTEM THIRD FLOOR PLAN  
SCALE: 1/8"=1'-0"



P1  
FA-103

DISTRIBUTED  
POWER MODULE  
FA-5 (PAD-3)

DISTRIBUTED  
POWER MODULE  
FA-4 (PAD-3)

- LEGEND:**
- [FCP] FIRE ALARM CONTROL PANEL
  - [GFAA] FIRE ALARM ANNUNCIATOR
  - [NAC] NOTIFICATION APPLIANCE CONTROLLER
  - [FPR] FIRE PUMP RUN
  - [FPF] FIRE PUMP FAULT
  - [FPO] FIRE PUMP OFF
  - [FPRAPS] FIRE PUMP RUN ALT POWER SOURCE
  - [IAM] FIRE ALARM INTERFACE MODULES
  - [GENR] GENERATOR RUN
  - [GENF] GENERATOR FAULT
  - [PRI] PRIMARY RECALL
  - [SRI] SECONDARY RECALL
  - [ALT] ALTERNATIVE RECALL
  - [HAT] FIREMANS HAT
  - [REL] RELAY MODULE
  - [ST] SHUNT TRIP
  - [P] MANUAL PULL STATION
  - [P CA] MANUAL PULL STATION - CLEAN AGENT SYSTEM
  - [S] WALL MOUNTED SPEAKER, M.H. 80" AFF
  - [S X] WALL MOUNTED SPEAKER/ STROBE, M.H. 80" AFF
  - [S O] CEILING MOUNTED SPEAKER
  - [S D] WALL MOUNTED STORBE, M.H. 80" AFF
  - [S X S] CEILING MOUNTED SPEAKER AND STROBE
  - [S O S] CEILING MOUNTED STROBE
  - [S D] SMOKE DETECTOR
  - [S D CA] SMOKE DETECTOR - CLEAN AGENT SYSTEM
  - [S D] DUCT SMOKE DETETOR
  - [S D] HEAT DETECTOR
  - [S X] VALVE TAMPER SWITCH
  - [S O] FLOW SWITCH
  - [S P] ALARM PRESSURE SWITCH
  - [S H/L] HIGH / LOW PRESSURE SWITCH
  - [S B] FIRE ALARM BELL
  - [S F] FIELD PHOTOGRAPH

CLIENT INFORMATION



SUPERIOR COURT OF THE  
DISTRICT OF COLUMBIA

PROJECT TITLE

FIRE ALARM RISER & FLOOR PLANS  
AS-BUILTS

PROJECT LOCATION

BUILDING C

SEAL & SIGNATURE

PROFESSIONAL CERTIFICATION:  
I HEREBY CERTIFY THAT THESE DOCUMENTS WERE  
PREPARED OR APPROVED BY ME, AND THAT I AM A DULY  
LICENSED PROFESSIONAL ENGINEER UNDER THE LAWS OF  
THE STATE OF MARYLAND, LICENSE NO. \_\_\_\_\_  
EXPIRATION DATE: \_\_\_\_\_



**ASTUTE ENGINEERING, PLLC.**  
1945 OLD GALLOW'S ROAD, STE 201, VIENNA, VA 22182  
PH: (202) 400-2004 | WWW.ASTUTENG.COM

FOR REVIEW ONLY

REVISIONS		
NO.	DESCRIPTION	DATE

TITLE  
THIRD FLOOR FIRE  
ALARM SYSTEM  
AS-BUILT

DRAWING NO.  
FA103

SCALE: 1/8"=1'-0"

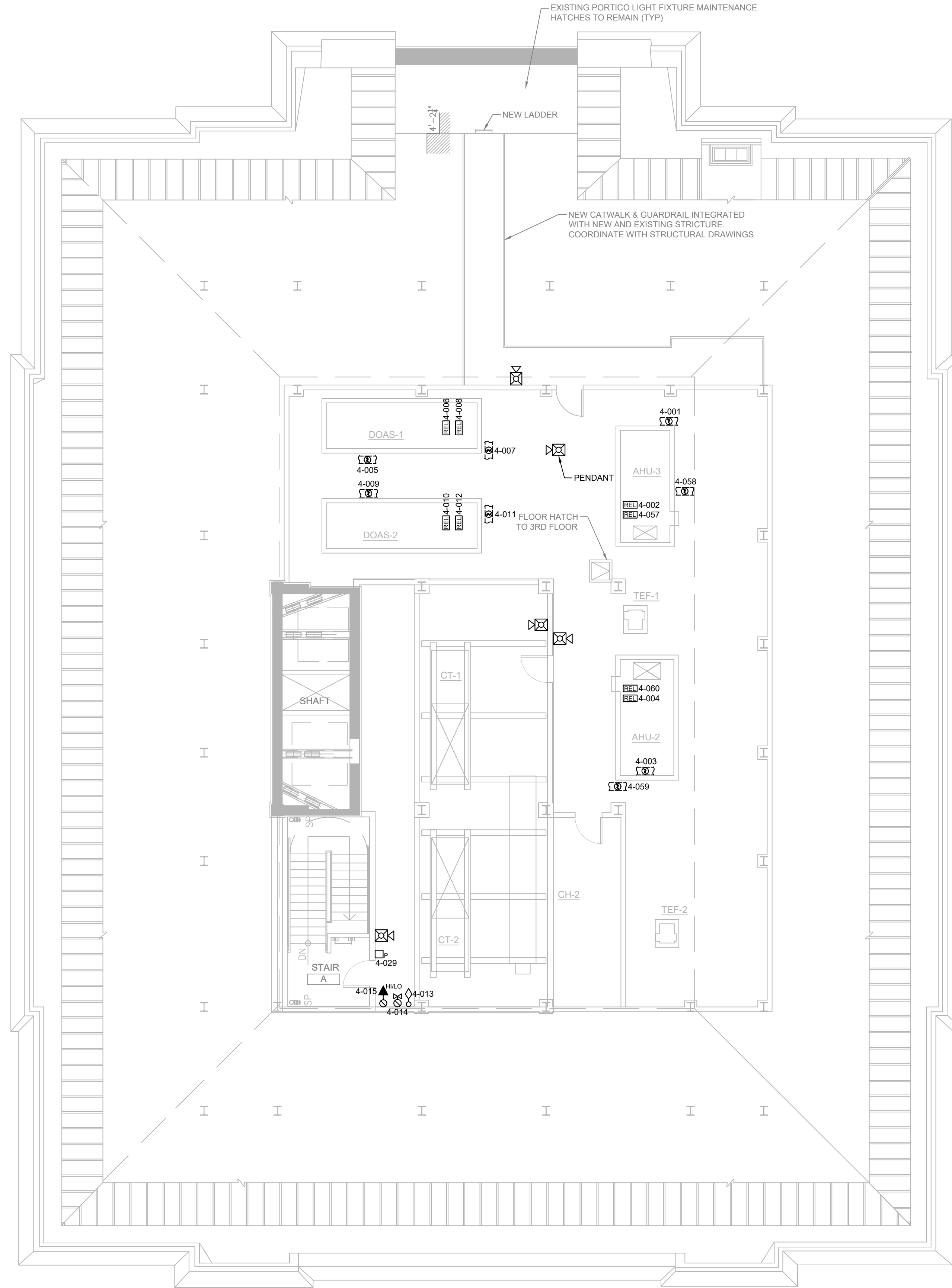
DATE: 12/20/2023

DES: KS

DRAWN: NS

CHECKED: HU





1 FIRE ALARM SYSTEM ATTIC FLOOR PLAN  
SCALE: 1/8"=1'-0"

- LEGEND:
- FCP FIRE ALARM CONTROL PANEL
  - GFAA FIRE ALARM ANNUNCIATOR
  - NAC NOTIFICATION APPLIANCE CONTROLLER
  - FPR FIRE PUMP RUN
  - FPF FIRE PUMP FAULT
  - FPO FIRE PUMP OFF
  - FPRAPS FIRE PUMP RUN ALT POWER SOURCE
  - IAM FIRE ALARM INTERFACE MODULES
  - GENR GENERATOR RUN
  - GENF GENERATOR FAULT
  - PRI PRIMARY RECALL
  - SRI SECONDARY RECALL
  - ALT ALTERNATIVE RECALL
  - HAT FIREMANS HAT
  - REL RELAY MODULE
  - ST SHUNT TRIP
  - P MANUAL PULL STATION
  - CA P MANUAL PULL STATION - CLEAN AGENT SYSTEM
  - WALL MOUNTED SPEAKER, M.H. 80" AFF
  - WALL MOUNTED SPEAKER/ STROBE, M.H. 80" AFF
  - CEILING MOUNTED SPEAKER
  - WALL MOUNTED STORBE, M.H. 80"AFF
  - CEILING MOUNTED SPEAKER AND STROBE
  - CEILING MOUNTED STROBE
  - SMOKE DETECTOR
  - SMOKE DETECTOR - CLEAN AGENT SYSTEM
  - DUCT SMOKE DETETOR
  - HEAT DETECTOR
  - VALVE TAMPER SWITCH
  - FLOW SWITCH
  - ALARM PRESSURE SWITCH
  - HIGH / LOW PRESSURE SWITCH
  - FIRE ALARM BELL
  - FIELD PHOTOGRAPH

CLIENT INFORMATION



SUPERIOR COURT OF THE  
DISTRICT OF COLUMBIA

PROJECT TITLE

FIRE ALARM RISER & FLOOR PLANS  
AS-BUILTS

PROJECT LOCATION

BUILDING C

SEAL & SIGNATURE

PROFESSIONAL CERTIFICATION:  
I HEREBY CERTIFY THAT THESE DOCUMENTS WERE  
PREPARED OR APPROVED BY ME, AND THAT I AM A DULY  
LICENSED PROFESSIONAL ENGINEER UNDER THE LAWS OF  
THE STATE OF MARYLAND, LICENSE NO. \_\_\_\_\_  
EXPIRATION DATE: \_\_\_\_\_



ASTUTE ENGINEERING, PLLC.  
1945 OLD GALLOW'S ROAD, STE 201, VIENNA, VA 22182  
PH: (202) 400-2004 | WWW.ASTUTENG.COM

FOR REVIEW ONLY

REVISIONS		
NO.	DESCRIPTION	DATE

TITLE  
ATTIC FLOOR FIRE  
ALARM SYSTEM  
AS-BUILT

DRAWING NO.  
FA104

SCALE: 1/8"=1'-0"

DATE: 12/20/2023

DES: KS

DRAWN: NS

CHECKED: HU