

1 FIRE ALARM SYSTEM BASEMENT OVERALL FLOOR PLAN
SCALE: 1/16"=1'-0"

CLIENT INFORMATION



SUPERIOR COURT OF THE
DISTRICT OF COLUMBIA

PROJECT TITLE

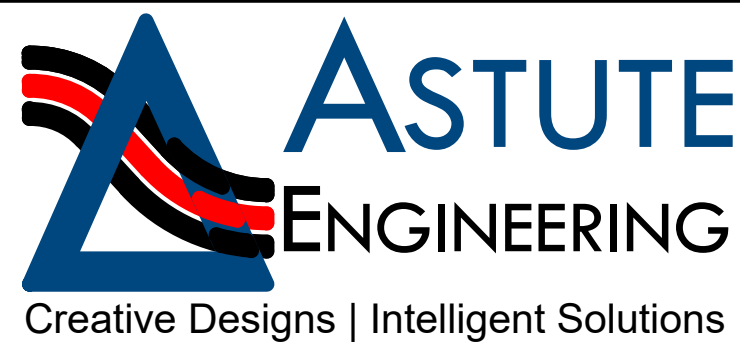
FIRE ALARM RISER & FLOOR PLANS
AS-BUILTS

PROJECT LOCATION

BUILDING D

SEAL & SIGNATURE

PROFESSIONAL CERTIFICATION:
I HEREBY CERTIFY THAT THESE DOCUMENTS WERE
PREPARED OR APPROVED BY ME, AND THAT I AM A DULY
LICENSED PROFESSIONAL ENGINEER UNDER THE LAWS OF
THE STATE OF MARYLAND, LICENSE NO. _____
EXPIRATION DATE: _____



Creative Designs | Intelligent Solutions

ASTUTE ENGINEERING, PLLC.
1945 OLD GALLOWS ROAD, STE 201, VIENNA, VA 22182
PH: (202) 400-2004 | WWW.ASTUTENG.COM

FOR REVIEW ONLY

REVISIONS		
NO.	DESCRIPTION	DATE

TITLE

BASEMENT FLOOR OVERALL
FIRE ALARM SYSTEM
AS-BUILT

DRAWING NO.

FA100

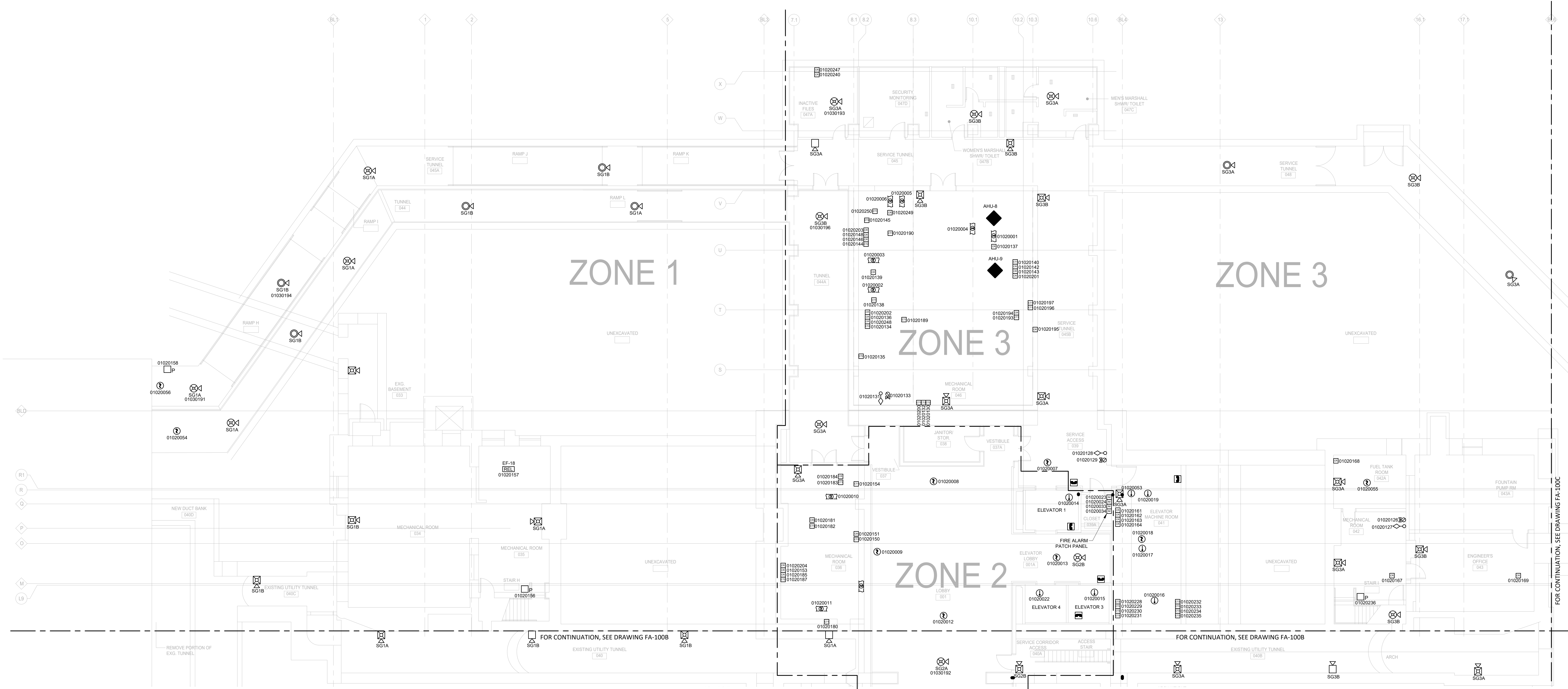
SCALE: 1/16"=1'-0"

DATE: 03/20/2024

DES: KS

DRAWN: NS

CHECKED: HU



1 FIRE ALARM SYSTEM PARTIAL BASEMENT FLOOR PLAN NORTH
SCALE: 1/8"=1'-0"

LEGEND:

- [FCP] FIRE ALARM CONTROL PANEL
- [FPR] FIRE PUMP RUN
- [FPF] FIRE PUMP FAULT
- [FPO] FIRE PUMP OFF
- [FPRAPS] FIRE PUMP RUN ALT POWER SOURCE
- [IAM] FIRE ALARM INTERFACE MODULES
- [GENR] GENERATOR RUN
- [GENF] GENERATOR FAULT
- [TRN] TURNSTILES
- [PRI] PRIMARY RECALL
- [ALT] ALTERNATIVE RECALL
- [HAT] FIREMANS HAT
- [REL] RELAY MODULE
- [ST] SHUNT TRIP
- [P] MANUAL PULL STATION
- [S] WALL MOUNTED SPEAKER, M.H. 80" AFF
- [S/S] WALL MOUNTED SPEAKER/ STROBE, M.H. 80" AFF
- [C] CEILING MOUNTED SPEAKER
- [S/S] WALL MOUNTED STORBE, M.H. 80"AFF
- [S/S] CEILING MOUNTED SPEAKER AND STROBE
- [S] CEILING MOUNTED STROBE
- [S] SMOKE DETECTOR
- [S] BEAM SMOKE REFLECTOR
- [S] BEAM SMOKE TRANSMITTER/RECEIVER
- [S] DUCT SMOKE DETETOR
- [S] HEAT DETECTOR
- [S] VALVE TAMPER SWITCH
- [S] FLOW SWITCH
- [S] ALARM PRESSURE SWITCH
- [S] HIGH / LOW PRESSURE SWITCH
- [S] FIELD PHOTOGRAPH

- [CR] INTELLIGENT CONTROL RELAY
- [CT1] INTELLIGENT MONITOR INPUT MODULE
- [CT2] INTELLIGENT MONITOR DUAL INPUT MODULE
- [IM] ISOLATOR MODULE

CLIENT INFORMATION



SUPERIOR COURT OF THE
DISTRICT OF COLUMBIA

PROJECT TITLE

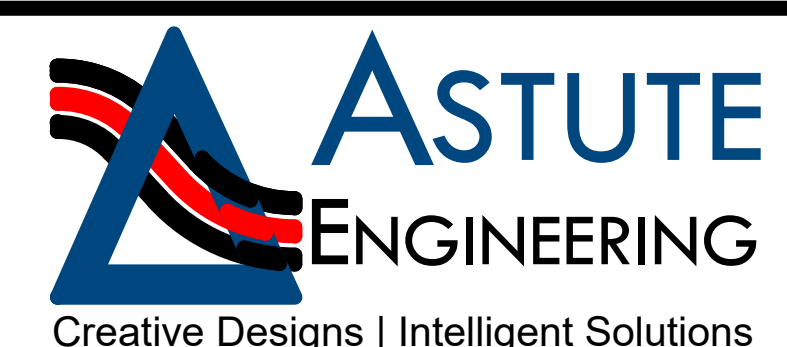
FIRE ALARM RISER & FLOOR PLANS
AS-BUILTS

PROJECT LOCATION

BUILDING D

SEAL & SIGNATURE

PROFESSIONAL CERTIFICATION:
I HEREBY CERTIFY THAT THESE DOCUMENTS WERE
PREPARED OR APPROVED BY ME, AND THAT I AM A DULY
LICENSED PROFESSIONAL ENGINEER UNDER THE LAWS OF
THE STATE OF MARYLAND, LICENSE NO. _____
EXPIRATION DATE: _____



ASTUTE ENGINEERING, PLLC.
1945 OLD GALLOWS ROAD, STE 201, VIENNA, VA 22182
PH: (202) 400-2004 | WWW.ASTUTENG.COM

FOR REVIEW ONLY

REVISIONS

NO.	DESCRIPTION	DATE

TITLE

PARTIAL BASEMENT FLOOR
FIRE ALARM SYSTEM
NORTH AS-BUILT

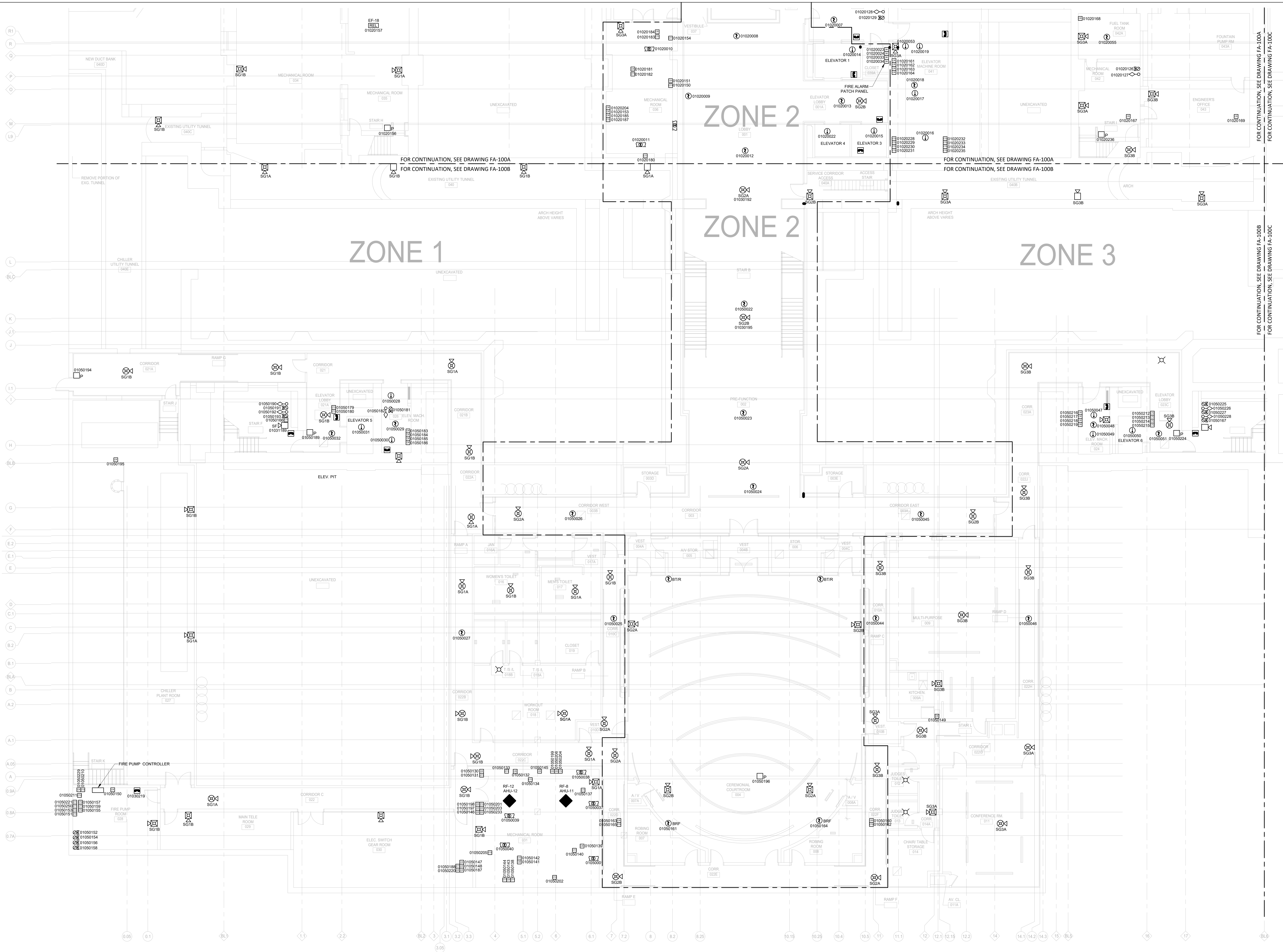
DRAWING NO.

FA100A

SCALE: 1/8"=1'-0"

DATE: 03/20/2024

DES: KS DRAWN: NS CHECKED: HU



1 FIRE ALARM SYSTEM PARTIAL BASEMENT FLOOR PLAN SOUTH
SCALE: 1/8"=1'-0"

- CR INTELLIGENT CONTROL RELAY
CT1 INTELLIGENT MONITOR INPUT MODULE
CT2 INTELLIGENT MONITOR DUAL INPUT MODULE
IM ISOLATOR MODULE

- LEGEND:
[FCP] FIRE ALARM CONTROL PANEL
[FPR] FIRE PUMP RUN
[FPF] FIRE PUMP FAULT
[FPO] FIRE PUMP OFF
[FPRAPS] FIRE PUMP RUN ALT POWER SOURCE
[IAM] FIRE ALARM INTERFACE MODULES
[GENR] GENERATOR RUN
[GENF] GENERATOR FAULT
[TRN] TURNSTILES
[PRI] PRIMARY RECALL
[ALT] ALTERNATIVE RECALL
[HAT] FIREMANS HAT
[REL] RELAY MODULE
[ST] SHUNT TRIP
[P] MANUAL PULL STATION

- WALL MOUNTED SPEAKER, M.H. 80" AFF
WALL MOUNTED SPEAKER/ STROBE, M.H. 80" AFF
CEILING MOUNTED SPEAKER
WALL MOUNTED STORBE, M.H. 80" AFF
CEILING MOUNTED SPEAKER AND STROBE
CEILING MOUNTED STROBE
SMOKE DETECTOR
BEAM SMOKE REFLECTOR
BEAM SMOKE TRANSMITTER/RECEIVER
DUCT SMOKE DETECTOR
HEAT DETECTOR
FIREMANS HAT
VALVE TAMPER SWITCH
FLOW SWITCH
ALARM PRESSURE SWITCH
HIGH / LOW PRESSURE SWITCH
FIELD PHOTOGRAPH

CLIENT INFORMATION



SUPERIOR COURT OF THE
DISTRICT OF COLUMBIA

PROJECT TITLE

FIRE ALARM RISER & FLOOR PLANS
AS-BUILTS

PROJECT LOCATION

BUILDING D

SEAL & SIGNATURE

PROFESSIONAL CERTIFICATION:
I HEREBY CERTIFY THAT THESE DOCUMENTS WERE
PREPARED OR APPROVED BY ME, AND THAT I AM A DULY
LICENSED PROFESSIONAL ENGINEER UNDER THE LAWS OF
THE STATE OF MARYLAND, LICENSE NO. _____
EXPIRATION DATE: _____



ASTUTE ENGINEERING, PLLC.
1945 OLD GALLOWES ROAD, STE 201, VIENNA, VA 22182
PH: (202) 400-2004 | WWW.ASTUTENG.COM

FOR REVIEW ONLY

REVISIONS		
NO.	DESCRIPTION	DATE

TITLE
PARTIAL BASEMENT FLOOR
FIRE ALARM SYSTEM
SOUTH AS-BUILT

DRAWING NO.
FA100B

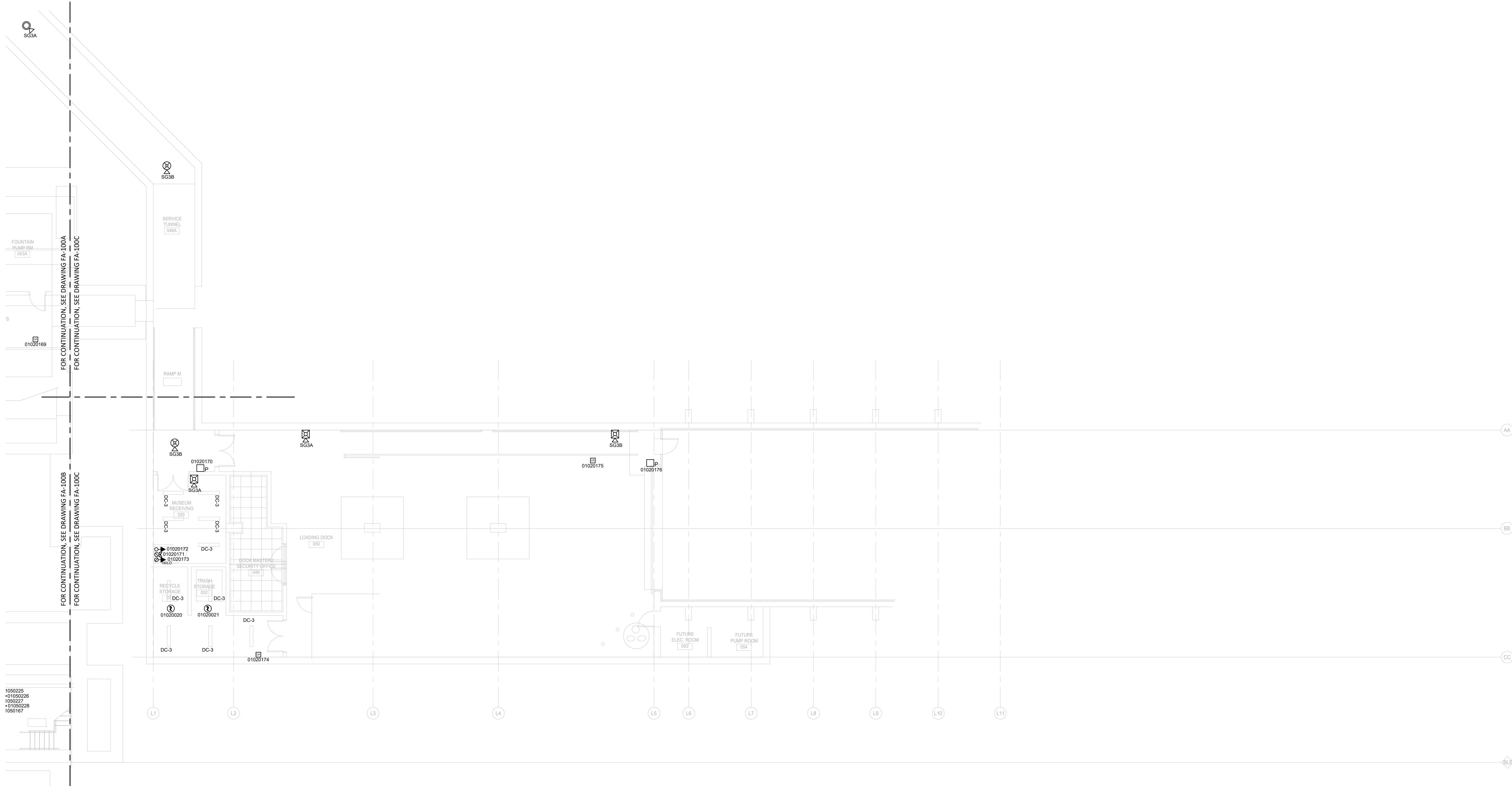
SCALE: 1/8"=1'-0"

DATE: 03/20/2024

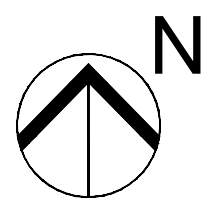
DES: KS

DRAWN: NS

CHECKED: HU



1 FIRE ALARM SYSTEM PARTIAL BASEMENT FLOOR PLAN EAST
SCALE: 1/8"=1'-0"



- GR INTELLIGENT CONTROL RELAY
CT INTELLIGENT MONITOR INPUT MODULE
CT2 INTELLIGENT MONITOR DUAL INPUT MODULE
IM ISOLATOR MODULE

- LEGEND:
- FCP FIRE ALARM CONTROL PANEL
FPR FIRE PUMP RUN
FPF FIRE PUMP FAULT
FPO FIRE PUMP OFF
FPRAPS FIRE PUMP RUN ALT POWER SOURCE
IAM FIRE ALARM INTERFACE MODULES
GENR GENERATOR RUN
GENF GENERATOR FAULT
TRN TURNSTILES
PRI PRIMARY RECALL
ALT ALTERNATIVE RECALL
HAT FIREMANS HAT
REL RELAY MODULE
ST SHUNT TRIP
P MANUAL PULL STATION
K WALL MOUNTED SPEAKER, M.H. 80" AFF
KX WALL MOUNTED SPEAKER/ STROBE, M.H. 80" AFF
C CEILING MOUNTED SPEAKER
D WALL MOUNTED STORBE, M.H. 80" AFF
CX CEILING MOUNTED SPEAKER AND STROBE
X CEILING MOUNTED STROBE
S SMOKE DETECTOR
S^{BRF} BEAM SMOKE REFLECTOR
S^{STR} BEAM SMOKE TRANSMITTER/RECEIVER
DS DUCT SMOKE DETETOR
H HEAT DETECTOR
V VALVE TAMPER SWITCH
F FLOW SWITCH
P ALARM PRESSURE SWITCH
P^{HL} HIGH / LOW PRESSURE SWITCH
P^{PH} FIELD PHOTOGRAPH

CLIENT INFORMATION



SUPERIOR COURT OF THE
DISTRICT OF COLUMBIA

PROJECT TITLE

FIRE ALARM RISER & FLOOR PLANS
AS-BUILTS

PROJECT LOCATION

BUILDING D

SEAL & SIGNATURE

PROFESSIONAL CERTIFICATION:
I HEREBY CERTIFY THAT THESE DOCUMENTS WERE
PREPARED OR APPROVED BY ME, AND THAT I AM A DULY
LICENSED PROFESSIONAL ENGINEER UNDER THE LAWS OF
THE STATE OF MARYLAND, LICENSE NO. _____
EXPIRATION DATE: _____



ASTUTE ENGINEERING, PLLC.
1945 OLD GALLOWS ROAD, STE 201, VIENNA, VA 22182
PH: (202) 400-2004 | WWW.ASTUTENG.COM

FOR REVIEW ONLY

REVISIONS		
NO.	DESCRIPTION	DATE

TITLE

PARTIAL BASEMENT FLOOR
FIRE ALARM SYSTEM EAST
AS-BUILT

DRAWING NO.

FA100C

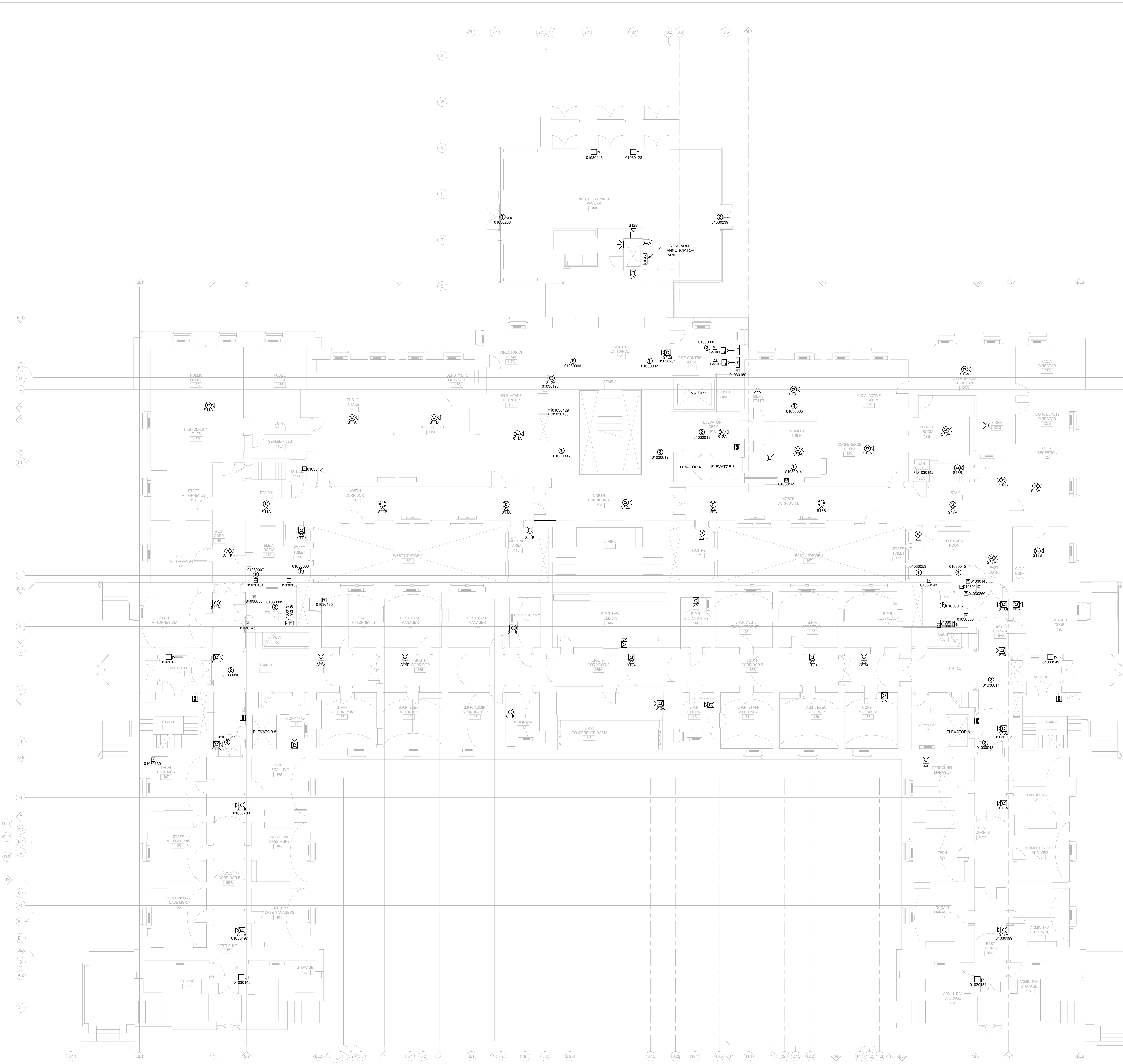
SCALE: 1/8"=1'-0"

DATE: 03/20/2024

DES: KS

DRAWN: NS

CHECKED: HU



- LEGEND:**
- [FCP] FIRE ALARM CONTROL PANEL
 - [FPR] FIRE PUMP RUN
 - [FPF] FIRE PUMP FAULT
 - [FPO] FIRE PUMP OFF
 - [FPRAPS] FIRE PUMP RUN ALT POWER SOURCE
 - [IAM] FIRE ALARM INTERFACE MODULES
 - [GENR] GENERATOR RUN
 - [GENF] GENERATOR FAULT
 - [TRN] TURNSTILES
 - [PRI] PRIMARY RECALL
 - [ALT] ALTERNATIVE RECALL
 - [HAT] FIREMANS HAT
 - [REL] RELAY MODULE
 - [ST] SHUNT TRIP
 - [P] MANUAL PULL STATION
 - [WMS] WALL MOUNTED SPEAKER, M.H. 80" AFF
 - [WMSST] WALL MOUNTED SPEAKER/ STROBE, M.H. 80" AFF
 - [CMS] CEILING MOUNTED SPEAKER
 - [WMSSTB] WALL MOUNTED STORBE, M.H. 80" AFF
 - [CMSSTB] CEILING MOUNTED SPEAKER AND STROBE
 - [CMSST] CEILING MOUNTED STROBE
 - [SD] SMOKE DETECTOR
 - [BSR] BEAM SMOKE REFLECTOR
 - [BSRT] BEAM SMOKE TRANSMITTER/RECEIVER
 - [SDT] DUCT SMOKE DETECTOR
 - [HDT] HEAT DETECTOR
 - [VTS] VALVE TAMPER SWITCH
 - [FS] FLOW SWITCH
 - [APS] ALARM PRESSURE SWITCH
 - [HPS] HIGH / LOW PRESSURE SWITCH
 - [FPH] FIELD PHOTOGRAPH
 - [ICR] INTELLIGENT CONTROL RELAY
 - [CTI] INTELLIGENT MONITOR INPUT MODULE
 - [CTD] INTELLIGENT MONITOR DUAL INPUT MODULE
 - [IM] ISOLATOR MODULE



CLIENT INFORMATION



SUPERIOR COURT OF THE DISTRICT OF COLUMBIA

PROJECT TITLE

FIRE ALARM RISER & FLOOR PLANS
AS-BUILTS

PROJECT LOCATION

BUILDING D

SEAL & SIGNATURE

PROFESSIONAL CERTIFICATION:
I HEREBY CERTIFY THAT THESE DOCUMENTS WERE
PREPARED OR APPROVED BY ME, AND THAT I AM A DULY
LICENSED PROFESSIONAL ENGINEER UNDER THE LAWS OF
THE STATE OF MARYLAND, LICENSE NO. _____
EXPIRATION DATE: _____



ASTUTE ENGINEERING
Creative Designs | Intelligent Solutions

ASTUTE ENGINEERING, PLLC.
1945 OLD GALLOWES ROAD, STE 201, VIENNA, VA 22182
PH: (202) 400-2004 | WWW.ASTUTENG.COM

FOR REVIEW ONLY

REVISIONS		
NO.	DESCRIPTION	DATE

TITLE

FIRST FLOOR FIRE
ALARM SYSTEM
AS-BUILT

DRAWING NO.

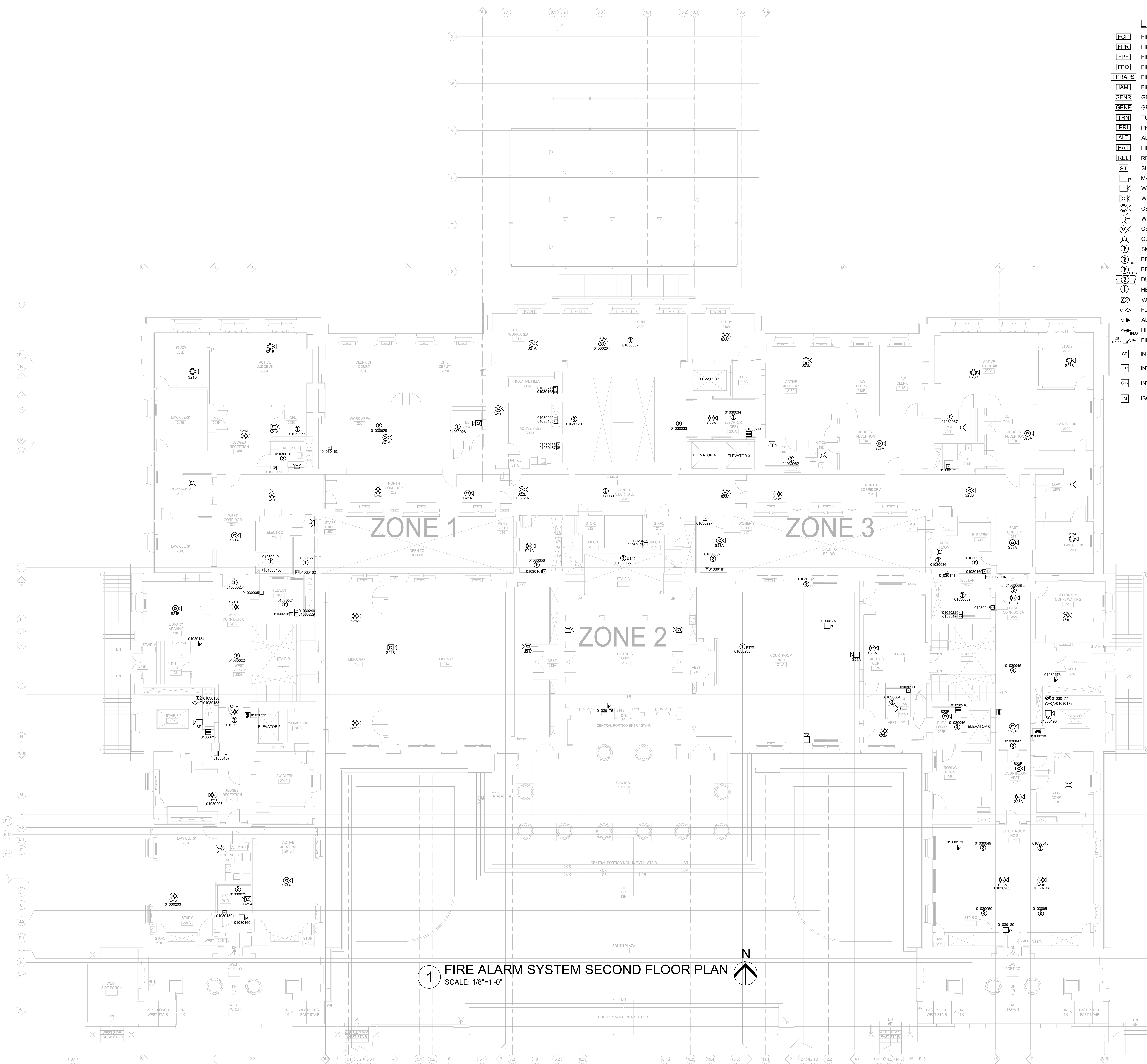
FA101

SCALE: 1/8"=1'-0"

DATE: 03/20/2024

DES: KS DRAWN: NS CHECKED: HU

1 FIRE ALARM SYSTEM FIRST FLOOR PLAN
SCALE: 1/8"=1'-0"



- LEGEND:**
- [FCP] FIRE ALARM CONTROL PANEL
 - [FPR] FIRE PUMP RUN
 - [FPF] FIRE PUMP FAULT
 - [FPO] FIRE PUMP OFF
 - [FPRAPS] FIRE PUMP RUN ALT POWER SOURCE
 - [IAM] FIRE ALARM INTERFACE MODULES
 - [GENR] GENERATOR RUN
 - [GENF] GENERATOR FAULT
 - [TRN] TURNSTILES
 - [PRI] PRIMARY RECALL
 - [ALT] ALTERNATIVE RECALL
 - [HAT] FIREMANS HAT
 - [REL] RELAY MODULE
 - [ST] SHUNT TRIP
 - [P] MANUAL PULL STATION
 - [WS] WALL MOUNTED SPEAKER, M.H. 80" AFF
 - [WSS] WALL MOUNTED SPEAKER/ STROBE, M.H. 80" AFF
 - [CS] CEILING MOUNTED SPEAKER
 - [WST] WALL MOUNTED STORBE, M.H. 80"AFF
 - [CMSG] CEILING MOUNTED SPEAKER AND STROBE
 - [CSST] CEILING MOUNTED STROBE
 - [SD] SMOKE DETECTOR
 - [BSR] BEAM SMOKE REFLECTOR
 - [BSTSR] BEAM SMOKE TRANSMITTER/RECEIVER
 - [DSD] DUCT SMOKE DETECTOR
 - [HDT] HEAT DETECTOR
 - [VTS] VALVE TAMPER SWITCH
 - [FS] FLOW SWITCH
 - [APS] ALARM PRESSURE SWITCH
 - [HPS] HIGH / LOW PRESSURE SWITCH
 - [FP] FIELD PHOTOGRAPH
 - [ICR] INTELLIGENT CONTROL RELAY
 - [IMI] INTELLIGENT MONITOR INPUT MODULE
 - [IDIM] INTELLIGENT MONITOR DUAL INPUT MODULE
 - [IM] ISOLATOR MODULE

1 FIRE ALARM SYSTEM SECOND FLOOR PLAN
SCALE: 1/8"=1'-0"

CLIENT INFORMATION



SUPERIOR COURT OF THE DISTRICT OF COLUMBIA

PROJECT TITLE

FIRE ALARM RISER & FLOOR PLANS AS-BUILTS

PROJECT LOCATION

BUILDING D

SEAL & SIGNATURE

PROFESSIONAL CERTIFICATION:
I HEREBY CERTIFY THAT THESE DOCUMENTS WERE PREPARED OR APPROVED BY ME, AND THAT I AM A DULY LICENSED PROFESSIONAL ENGINEER UNDER THE LAWS OF THE STATE OF MARYLAND, LICENSE NO. _____
EXPIRATION DATE: _____



ASTUTE ENGINEERING, PLLC.
1945 OLD GALLOWS ROAD, STE 201, VIENNA, VA 22182
PH: (202) 400-2004 | WWW.ASTUTENG.COM

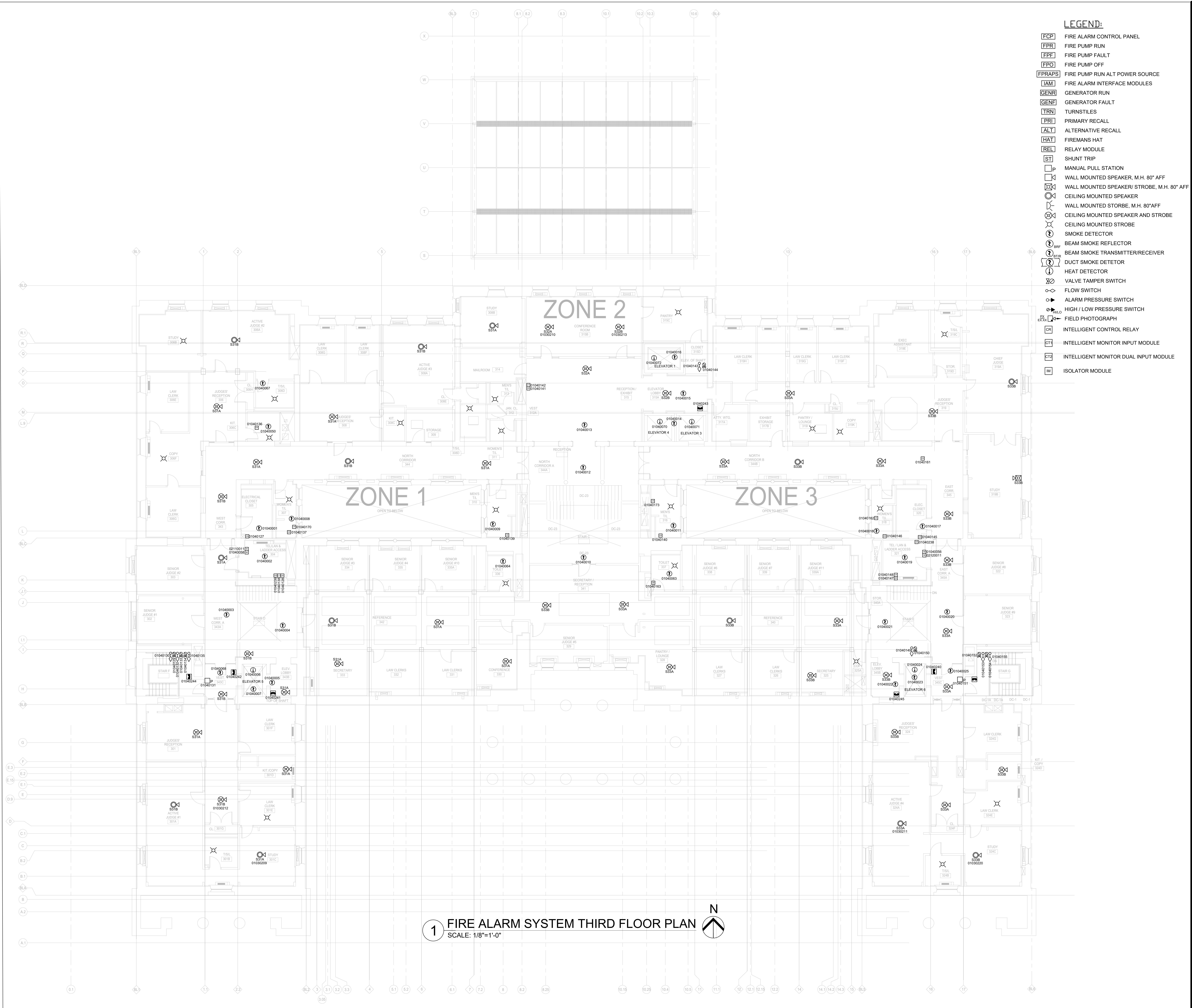
FOR REVIEW ONLY

REVISIONS		
NO.	DESCRIPTION	DATE

TITLE
SECOND FLOOR FIRE ALARM SYSTEM AS-BUILT

DRAWING NO.
FA102

SCALE: 1/8"=1'-0"
DATE: 03/20/2024
DES: KS DRAWN: NS CHECKED: HU



LEGEND:

- [FCP] FIRE ALARM CONTROL PANEL
- [FPR] FIRE PUMP RUN
- [FPF] FIRE PUMP FAULT
- [EPO] FIRE PUMP OFF
- [FPRAPS] FIRE PUMP RUN ALT POWER SOURCE
- [IAM] FIRE ALARM INTERFACE MODULES
- [GENR] GENERATOR RUN
- [GENF] GENERATOR FAULT
- [TRN] TURNSTILES
- [PRI] PRIMARY RECALL
- [ALT] ALTERNATIVE RECALL
- [HAT] FIREMANS HAT
- [REL] RELAY MODULE
- [ST] SHUNT TRIP
- [P] MANUAL PULL STATION
- [WMS] WALL MOUNTED SPEAKER, M.H. 80" AFF
- [WMS] WALL MOUNTED SPEAKER/ STROBE, M.H. 80" AFF
- [CMS] CEILING MOUNTED SPEAKER
- [WMS] WALL MOUNTED STORBE, M.H. 80"AFF
- [CMS] CEILING MOUNTED SPEAKER AND STROBE
- [CMS] CEILING MOUNTED STROBE
- [SD] SMOKE DETECTOR
- [BSR] BEAM SMOKE REFLECTOR
- [BSRT] BEAM SMOKE TRANSMITTER/RECEIVER
- [DSD] DUCT SMOKE DETECTOR
- [HTD] HEAT DETECTOR
- [VTS] VALVE TAMPER SWITCH
- [FS] FLOW SWITCH
- [APS] ALARM PRESSURE SWITCH
- [HLP] HIGH / LOW PRESSURE SWITCH
- [FPH] FIELD PHOTOGRAPH
- [ICR] INTELLIGENT CONTROL RELAY
- [CTI] INTELLIGENT MONITOR INPUT MODULE
- [IDM] INTELLIGENT MONITOR DUAL INPUT MODULE
- [IM] ISOLATOR MODULE

CLIENT INFORMATION



SUPERIOR COURT OF THE
DISTRICT OF COLUMBIA

PROJECT TITLE

FIRE ALARM RISER & FLOOR PLANS
AS-BUILTS

PROJECT LOCATION

BUILDING D

SEAL & SIGNATURE

PROFESSIONAL CERTIFICATION:
I HEREBY CERTIFY THAT THESE DOCUMENTS WERE
PREPARED OR APPROVED BY ME, AND THAT I AM A DULY
LICENSED PROFESSIONAL ENGINEER UNDER THE LAWS OF
THE STATE OF MARYLAND, LICENSE NO. _____
EXPIRATION DATE: _____



ASTUTE ENGINEERING, PLLC.
1945 OLD GALLOWS ROAD, STE 201, VIENNA, VA 22182
PH: (202) 400-2004 | WWW.ASTUTENG.COM

FOR REVIEW ONLY

REVISIONS

NO.	DESCRIPTION	DATE

TITLE

THIRD FLOOR FIRE
ALARM SYSTEM
AS-BUILT

DRAWING NO.
FA103

SCALE: 1/8"=1'-0"

DATE: 03/20/2024

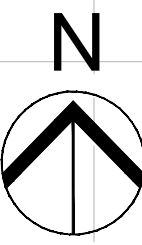
DES: KS

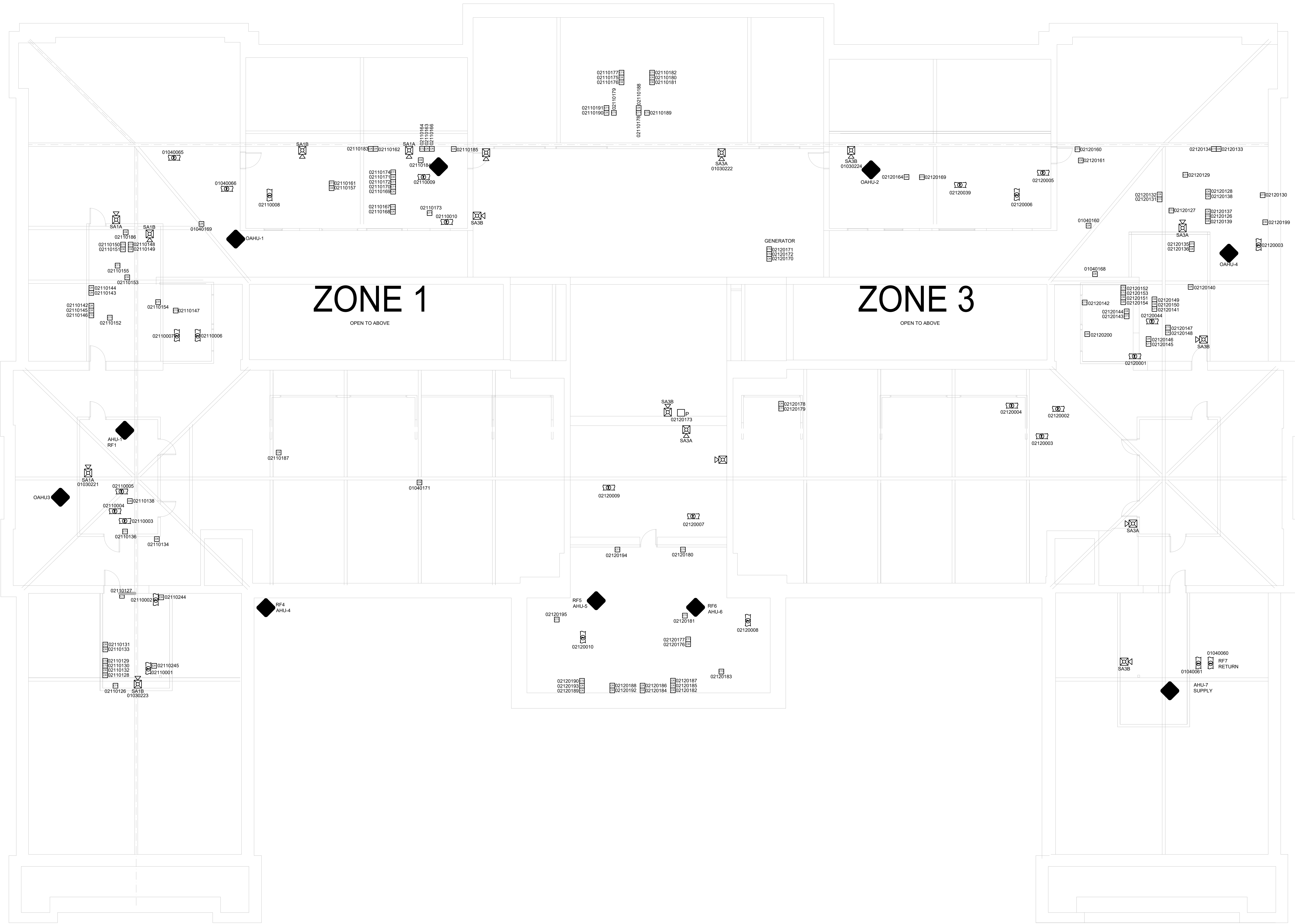
DRAWN: NS

CHECKED: HU

1 FIRE ALARM SYSTEM THIRD FLOOR PLAN

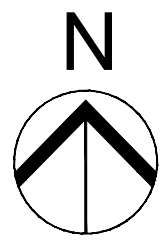
SCALE: 1/8"=1'-0"





- LEGEND:**
- [FCP] FIRE ALARM CONTROL PANEL
 - [FPR] FIRE PUMP RUN
 - [FPF] FIRE PUMP FAULT
 - [FPO] FIRE PUMP OFF
 - [FPRAPS] FIRE PUMP RUN ALT POWER SOURCE
 - [IAM] FIRE ALARM INTERFACE MODULES
 - [GENR] GENERATOR RUN
 - [GENF] GENERATOR FAULT
 - [TRN] TURNSTILES
 - [PRI] PRIMARY RECALL
 - [ALT] ALTERNATIVE RECALL
 - [HAT] FIREMANS HAT
 - [REL] RELAY MODULE
 - [ST] SHUNT TRIP
 - [P] MANUAL PULL STATION
 - [WMS] WALL MOUNTED SPEAKER, M.H. 80" AFF
 - [WMSST] WALL MOUNTED SPEAKER/ STROBE, M.H. 80" AFF
 - [CMS] CEILING MOUNTED SPEAKER
 - [WMSST] WALL MOUNTED STORBE, M.H. 80" AFF
 - [CMSST] CEILING MOUNTED SPEAKER AND STROBE
 - [CMSST] CEILING MOUNTED STROBE
 - [SD] SMOKE DETECTOR
 - [BRF] BEAM SMOKE REFLECTOR
 - [BTR] BEAM SMOKE TRANSMITTER/RECEIVER
 - [DSD] DUCT SMOKE DETECTOR
 - [HDT] HEAT DETECTOR
 - [VTS] VALVE TAMPER SWITCH
 - [FS] FLOW SWITCH
 - [APS] ALARM PRESSURE SWITCH
 - [HPS] HIGH / LOW PRESSURE SWITCH
 - [FPH] FIELD PHOTOGRAPH
 - [ICR] INTELLIGENT CONTROL RELAY
 - [IMI] INTELLIGENT MONITOR INPUT MODULE
 - [IMD] INTELLIGENT MONITOR DUAL INPUT MODULE
 - [IM] ISOLATOR MODULE

1 FIRE ALARM SYSTEM ATTIC FLOOR PLAN
SCALE: 1/8"=1'-0"



CLIENT INFORMATION



SUPERIOR COURT OF THE
DISTRICT OF COLUMBIA

PROJECT TITLE

FIRE ALARM RISER & FLOOR PLANS
AS-BUILTS

PROJECT LOCATION

BUILDING D

SEAL & SIGNATURE

PROFESSIONAL CERTIFICATION:
I HEREBY CERTIFY THAT THESE DOCUMENTS WERE
PREPARED OR APPROVED BY ME, AND THAT I AM A DULY
LICENSED PROFESSIONAL ENGINEER UNDER THE LAWS OF
THE STATE OF MARYLAND, LICENSE NO. _____
EXPIRATION DATE: _____



ASTUTE ENGINEERING, PLLC.
1945 OLD GALLOWS ROAD, STE 201, VIENNA, VA 22182
PH: (202) 400-2004 | WWW.ASTUTENG.COM

FOR REVIEW ONLY

REVISIONS		
NO.	DESCRIPTION	DATE

TITLE

ATTIC FLOOR FIRE
ALARM SYSTEM
AS-BUILT

DRAWING NO.
FA104

SCALE: 1/8"=1'-0"

DATE: 03/20/2024

DES: KS

DRAWN: NS

CHECKED: HU